

A15346

Leader in Biomolecular Solutions for Life Science



LIN7A Rabbit pAb

Catalog No.: A15346

Basic Information

Observed MW

23-30kDa

Calculated MW

26kDa

Category

Polyclonal Antibody

Applications

WB,ELISA

Cross-Reactivity

Human,Mouse,Rat

Background

The protein encoded by this gene is involved in generating and maintaining the asymmetric distribution of channels and receptors at the cell membrane. The encoded protein also is required for the localization of some specific channels and can be part of a protein complex that couples synaptic vesicle exocytosis to cell adhesion in the brain.

Recommended Dilutions

WB 1:200 - 1:2000

ELISA Recommended starting concentration is 1 µg/mL. Please optimize the concentration based on your specific assay requirements.

Immunogen Information

Gene ID

8825

Swiss Prot

O14910

Immunogen

Recombinant protein (or fragment). This information is considered to be commercially sensitive.

Synonyms

LIN7; MALS1; VELI1; LIN-7A; MALS-1; TIP-33; LIN7A

Contact



www.abclonal.com

Product Information

Source

Rabbit

Isotype

IgG

Purification

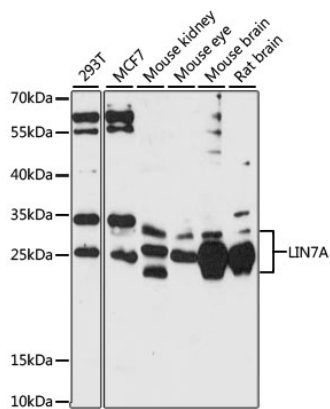
Affinity purification

Storage

Store at -20°C. Avoid freeze / thaw cycles.

Buffer: PBS with 0.01% thimerosal, 50% glycerol, pH7.3.

Validation Data



Western blot analysis of various lysates using LIN7A Rabbit pAb (A15346) at 1:1000 dilution.

Secondary antibody: HRP-conjugated Goat anti-Rabbit IgG (H+L) (AS014) at 1:10000 dilution.

Lysates/proteins: 25µg per lane.

Blocking buffer: 3% nonfat dry milk in TBST.

Detection: ECL Basic Kit (RM00020).

Exposure time: 60s.