

A15377

Leader in Biomolecular Solutions for Life Science



KIF20A Rabbit pAb

Catalog No.: A15377

1 Publications

Basic Information

Observed MW

105kDa

Calculated MW

100kDa

Category

Polyclonal Antibody

Applications

WB, ELISA

Cross-Reactivity

Human, Mouse, Rat

Background

Enables protein kinase binding activity. Involved in microtubule bundle formation; midbody abscission; and regulation of cytokinesis. Located in several cellular components, including cleavage furrow; intercellular bridge; and midbody. Implicated in restrictive cardiomyopathy.

Recommended Dilutions

WB 1:200 - 1:2000

ELISA Recommended starting concentration is 1 µg/mL. Please optimize the concentration based on your specific assay requirements.

Immunogen Information

Gene ID

10112

Swiss Prot

O95235

Immunogen

Recombinant protein (or fragment). This information is considered to be commercially sensitive.

Synonyms

RCM6; MKLP2; RAB6KIFL; KIF20A

Contact

 www.abclonal.com

Product Information

Source

Rabbit

Isotype

IgG

Purification

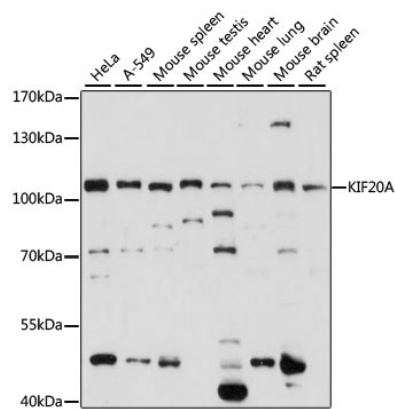
Affinity purification

Storage

Store at -20°C. Avoid freeze / thaw cycles.

Buffer: PBS with 0.09% Sodium azide, 50% glycerol, pH 7.3.

Validation Data



Western blot analysis of various lysates using KIF20A Rabbit pAb (A15377) at 1:1000 dilution.
Secondary antibody: HRP-conjugated Goat anti-Rabbit IgG (H+L) (AS014) at 1:10000 dilution.
Lysates/proteins: 25µg per lane.
Blocking buffer: 3% nonfat dry milk in TBST.
Detection: ECL Basic Kit (RM00020).
Exposure time: 15s.