

A15393

Leader in Biomolecular Solutions for Life Science



AFG3L2 Rabbit pAb

Catalog No.: A15393

Basic Information

Observed MW

80-90kDa

Calculated MW

89kDa

Category

Polyclonal Antibody

Applications

WB,IHC-P,IP,ELISA

Cross-Reactivity

Human,Mouse,Rat

Background

This gene encodes a protein localized in mitochondria and closely related to paraplegin. The paraplegin gene is responsible for an autosomal recessive form of hereditary spastic paraplegia. This gene is a candidate gene for other hereditary spastic paraplegias or neurodegenerative disorders.

Recommended Dilutions

WB 1:500 - 1:1000

IHC-P 1:50 - 1:200

IP 0.5µg-4µg antibody for
200µg-400µg extracts
of whole cells

ELISA Recommended starting
concentration is 1
µg/mL. Please optimize
the concentration
based on your specific
assay requirements.

Immunogen Information

Gene ID

10939

Swiss Prot

Q9Y4W6

Immunogen

Recombinant protein (or fragment). This information is considered to be commercially sensitive.

Synonyms

OPA12; SCA28; SPAX5; AFG3L2

Product Information

Source

Rabbit

Isotype

IgG

Purification

Affinity purification

Storage

Store at -20°C. Avoid freeze / thaw cycles.

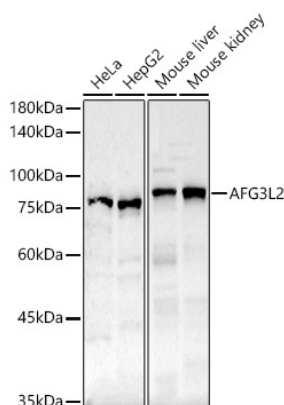
Buffer: PBS containing 50% glycerol, preserved with proclin300 or sodium azide (as specified on the Certificate of Analysis), pH 7.3.

Contact

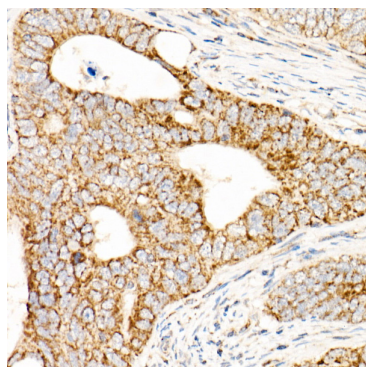


www.abclonal.com

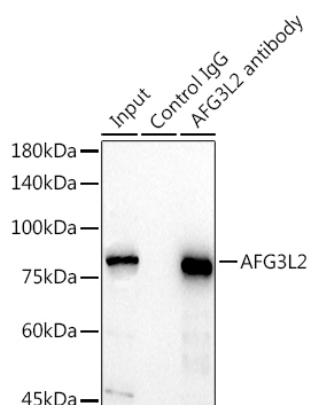
Validation Data



Western blot analysis of various lysates, using AFG3L2 Rabbit pAb (A15393) at 1:500 dilution.
Secondary antibody: HRP-conjugated Goat anti-Rabbit IgG (H+L) (AS014) at 1:10000 dilution.
Lysates/proteins: 25µg per lane.
Blocking buffer: 3% nonfat dry milk in TBST.
Detection: ECL Basic Kit (RM00020).
Exposure time: 30s.



Immunohistochemistry analysis of paraffin-embedded Human colon carcinoma using AFG3L2 Rabbit pAb (A15393) at dilution of 1:50 (40x lens). High pressure antigen retrieval performed with 0.01M Citrate buffer (pH 6.0) prior to IHC staining.



Immunoprecipitation analysis of 300 µg extracts of HeLa cells using 3 µg AFG3L2 antibody (A15393). Western blot was performed from the immunoprecipitate using AFG3L2 antibody (A15393) at a dilution of 1:1000.