

A15541

Leader in Biomolecular Solutions for Life Science



MICALL1 Rabbit pAb

Catalog No.: A15541

Basic Information

Observed MW

95kDa

Calculated MW

93kDa

Category

Polyclonal Antibody

Applications

WB,ELISA

Cross-Reactivity

Mouse

Background

Enables identical protein binding activity; phosphatidic acid binding activity; and small GTPase binding activity. Involved in several processes, including plasma membrane tubulation; protein localization to endosome; and slow endocytic recycling. Located in late endosome and recycling endosome membrane. Is extrinsic component of membrane.

Recommended Dilutions

WB 1:200 - 1:2000

ELISA Recommended starting concentration is 1 µg/mL. Please optimize the concentration based on your specific assay requirements.

Immunogen Information

Gene ID

85377

Swiss Prot

Q8N3F8

Immunogen

Recombinant protein (or fragment). This information is considered to be commercially sensitive.

Synonyms

MIRAB13; MICAL-L1; MICALL1

Contact

 www.abclonal.com

Product Information

Source

Rabbit

Isotype

IgG

Purification

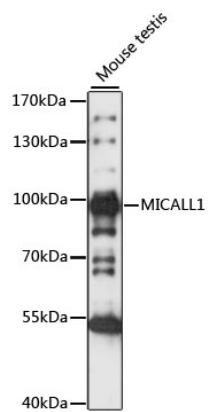
Affinity purification

Storage

Store at -20°C. Avoid freeze / thaw cycles.

Buffer: PBS with 0.01% thimerosal, 50% glycerol, pH7.3.

Validation Data



Western blot analysis of lysates from Mouse testis, using MICALL1 Rabbit pAb (A15541) at 1:1000 dilution.

Secondary antibody: HRP-conjugated Goat anti-Rabbit IgG (H+L) (AS014) at 1:10000 dilution.

Lysates/proteins: 25µg per lane.

Blocking buffer: 3% nonfat dry milk in TBST.

Detection: ECL Basic Kit (RM00020).

Exposure time: 30S.