

A15650

Leader in Biomolecular Solutions for Life Science



C1R Rabbit pAb

Catalog No.: A15650

Basic Information

Observed MW

80kDa

Calculated MW

80kDa

Category

Polyclonal Antibody

Applications

WB,ELISA

Cross-Reactivity

Human,Mouse,Rat

Background

This gene encodes a member of the peptidase S1 protein family. The encoded protein is a proteolytic subunit in the complement system C1 complex. The complement system acts as a mediator in the innate immune response by ultimately triggering phagocytosis, inflammation, and rupturing the bacterial cell wall. Mutations in this gene are associated with Ehlers-Danlos Syndrome.

Recommended Dilutions

WB 1:500 - 1:2000

ELISA Recommended starting concentration is 1 µg/mL. Please optimize the concentration based on your specific assay requirements.

Immunogen Information

Gene ID

715

Swiss Prot

P00736

Immunogen

Recombinant protein (or fragment). This information is considered to be commercially sensitive.

Synonyms

EDS8; EDSPD1; C1R

Contact

 www.abclonal.com

Product Information

Source

Rabbit

Isotype

IgG

Purification

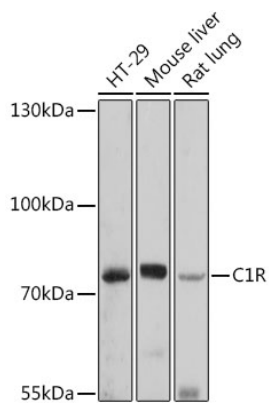
Affinity purification

Storage

Store at -20°C. Avoid freeze / thaw cycles.

Buffer: PBS with 0.01% thimerosal, 50% glycerol, pH7.3.

Validation Data



Western blot analysis of various lysates using C1R Rabbit pAb (A15650) at 1:1000 dilution.

Secondary antibody: HRP-conjugated Goat anti-Rabbit IgG (H+L) (AS014) at 1:10000 dilution.

Lysates/proteins: 25µg per lane.

Blocking buffer: 3% nonfat dry milk in TBST.

Detection: ECL Basic Kit (RM00020).

Exposure time: 90s.