

A15656

Leader in Biomolecular Solutions for Life Science



CDC20 Rabbit pAb

Catalog No.: A15656

6 Publications

Basic Information

Observed MW

55kDa

Calculated MW

55kDa

Category

Polyclonal Antibody

Applications

WB,IHC-P,IF/ICC,IP,ELISA

Cross-Reactivity

Human,Mouse,Rat

Background

CDC20 appears to act as a regulatory protein interacting with several other proteins at multiple points in the cell cycle. It is required for two microtubule-dependent processes, nuclear movement prior to anaphase and chromosome separation.

Recommended Dilutions

WB	1:500 - 1:1000
IHC-P	1:50 - 1:100
IF/ICC	1:50 - 1:100
IP	0.5µg-4µg antibody for 200µg-400µg extracts of whole cells
ELISA	Recommended starting concentration is 1 µg/mL. Please optimize the concentration based on your specific assay requirements.

Immunogen Information

Gene ID

991

Swiss Prot

Q12834

Immunogen

Recombinant protein (or fragment). This information is considered to be commercially sensitive.

Synonyms

CDC20A; OOMD14; p55CDC; OZEMA14; bA276H19.3; CDC20

Product Information

Source

Rabbit

Isotype

IgG

Purification

Affinity purification

Storage

Store at -20°C. Avoid freeze / thaw cycles.

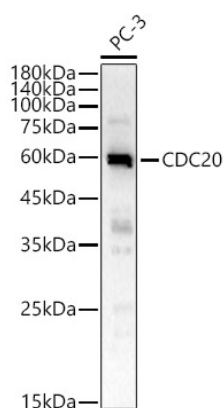
Buffer: PBS with 0.09% Sodium azide, 50% glycerol, pH7.3.

Contact



www.abclonal.com

Validation Data



Western blot analysis of lysates from PC-3 cells, using CDC20 Rabbit pAb (A15656) at 1:1000 dilution.

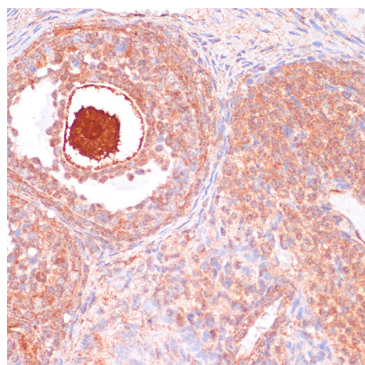
Secondary antibody: HRP-conjugated Goat anti-Rabbit IgG (H+L) (AS014) at 1:10000 dilution.

Lysates/proteins: 25µg per lane.

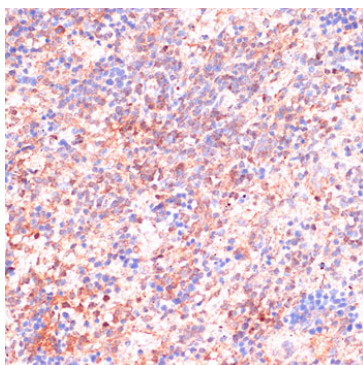
Blocking buffer: 3% nonfat dry milk in TBST.

Detection: ECL Basic Kit (RM00020).

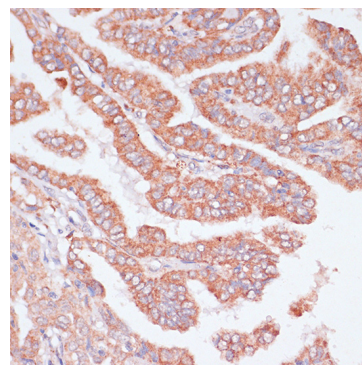
Exposure time: 90s.



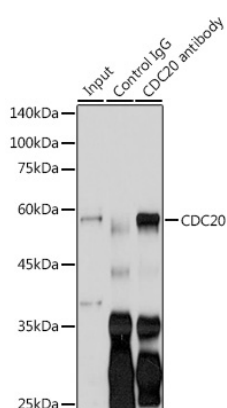
Immunohistochemistry analysis of paraffin-embedded Rat ovary using CDC20 Rabbit pAb (A15656) at dilution of 1:100 (40x lens). Microwave antigen retrieval performed with 0.01M PBS Buffer (pH 7.2) prior to IHC staining.



Immunohistochemistry analysis of paraffin-embedded Rat spleen using CDC20 Rabbit pAb (A15656) at dilution of 1:100 (40x lens). Microwave antigen retrieval performed with 0.01M PBS Buffer (pH 7.2) prior to IHC staining.



Immunohistochemistry analysis of paraffin-embedded Human thyroid cancer using CDC20 Rabbit pAb (A15656) at dilution of 1:100 (40x lens). Microwave antigen retrieval performed with 0.01M PBS Buffer (pH 7.2) prior to IHC staining.



Immunoprecipitation analysis of 200 µg extracts of LO2 cells using 3 µg CDC20 antibody (A15656). Western blot was performed from the immunoprecipitate using CDC20 antibody (A15656) at a dilution of 1:1000.