

A15663

Leader in Biomolecular Solutions for Life Science



DRP2 Rabbit pAb

Catalog No.: A15663

Basic Information

Observed MW

88kDa

Calculated MW

108kDa

Category

Polyclonal Antibody

Applications

WB, ELISA

Cross-Reactivity

Mouse, Rat

Background

Members of the dystrophin family of proteins perform a critical role in the maintenance of membrane-associated complexes at points of intercellular contact in vertebrate cells. The protein encoded by this gene is predicted to resemble certain short C-terminal isoforms of dystrophin and dystrophin-related protein 1 (DRP1 or utrophin). DRP2 is expressed principally in the brain and spinal cord. Two transcript variants encoding different isoforms have been found for this gene.

Recommended Dilutions

WB 1:500 - 1:2000

ELISA Recommended starting concentration is 1 µg/mL. Please optimize the concentration based on your specific assay requirements.

Immunogen Information

Gene ID

1821

Swiss Prot

Q13474

Immunogen

Recombinant protein (or fragment). This information is considered to be commercially sensitive.

Synonyms

DRP-2; DRP2

Contact



www.abclonal.com

Product Information

Source

Rabbit

Isotype

IgG

Purification

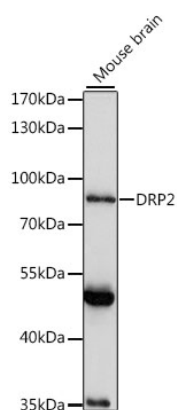
Affinity purification

Storage

Store at -20°C. Avoid freeze / thaw cycles.

Buffer: PBS with 0.01% thimerosal, 50% glycerol, pH 7.3.

Validation Data



Western blot analysis of lysates from mouse brain, using DRP2 Rabbit pAb (A15663) at 1:1000 dilution.

Secondary antibody: HRP-conjugated Goat anti-Rabbit IgG (H+L) (AS014) at 1:10000 dilution.

Lysates/proteins: 25µg per lane.

Blocking buffer: 3% nonfat dry milk in TBST.

Detection: ECL Basic Kit (RM00020).

Exposure time: 30s.