

A15725

Leader in Biomolecular Solutions for Life Science



SNAPC1 Rabbit pAb

Catalog No.: A15725

Basic Information

Observed MW

50-55kDa

Calculated MW

43kDa

Category

Polyclonal Antibody

Applications

WB,ELISA

Cross-Reactivity

Human,Mouse,Rat

Background

Predicted to enable sequence-specific DNA binding activity. Predicted to be involved in snRNA transcription by RNA polymerase II and snRNA transcription by RNA polymerase III. Located in nucleolus and nucleoplasm.

Recommended Dilutions

WB 1:500 - 1:2000

ELISA Recommended starting concentration is 1 µg/mL. Please optimize the concentration based on your specific assay requirements.

Immunogen Information

Gene ID

6617

Swiss Prot

Q16533

Immunogen

Recombinant protein (or fragment). This information is considered to be commercially sensitive.

Synonyms

SNAP43; PTFgamma; SNAPC1

Contact



www.abclonal.com

Product Information

Source

Rabbit

Isotype

IgG

Purification

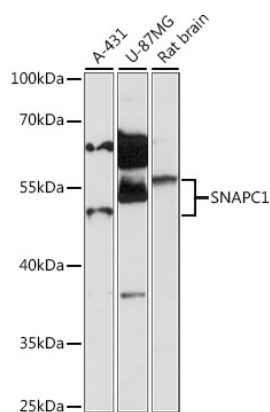
Affinity purification

Storage

Store at -20°C. Avoid freeze / thaw cycles.

Buffer: PBS with 0.01% thimerosal, 50% glycerol, pH7.3.

Validation Data



Western blot analysis of various lysates using SNAPC1 Rabbit pAb (A15725) at 1:1000 dilution.
Secondary antibody: HRP-conjugated Goat anti-Rabbit IgG (H+L) (AS014) at 1:10000 dilution.
Lysates/proteins: 25µg per lane.
Blocking buffer: 3% nonfat dry milk in TBST.
Detection: ECL Enhanced Kit (RM00021).
Exposure time: 90s.