

A15985

Leader in Biomolecular Solutions for Life Science



BOLA3 Rabbit pAb

Catalog No.: A15985

Basic Information

Observed MW

12kDa

Calculated MW

12kDa

Category

Polyclonal Antibody

Applications

WB,IHC-P,ELISA

Cross-Reactivity

Human,Mouse,Rat

Background

This gene encodes a protein that plays an essential role in the production of iron-sulfur (Fe-S) clusters for the normal maturation of lipoate-containing 2-oxoacid dehydrogenases, and for the assembly of the mitochondrial respiratory chain complexes. Mutation in this gene has been associated with multiple mitochondrial dysfunctions syndrome-2. Two alternatively spliced transcript variants encoding different isoforms with distinct subcellular localization have been reported for this gene (PMID:21944046).

Recommended Dilutions

WB 1:500 - 1:2000

IHC-P 1:50 - 1:200

ELISA Recommended starting concentration is 1 µg/mL. Please optimize the concentration based on your specific assay requirements.

Immunogen Information

Gene ID

388962

Swiss Prot

Q53S33

Immunogen

Recombinant protein (or fragment). This information is considered to be commercially sensitive.

Synonyms

MMDS2; BOLA3

Contact

 www.abclonal.com

Product Information

Source

Rabbit

Isotype

IgG

Purification

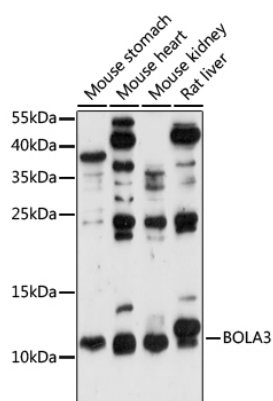
Affinity purification

Storage

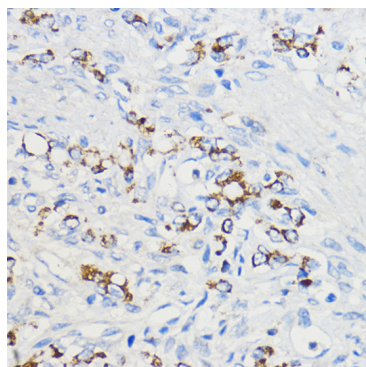
Store at -20°C. Avoid freeze / thaw cycles.

Buffer: PBS with 0.01% thimerosal, 50% glycerol, pH7.3.

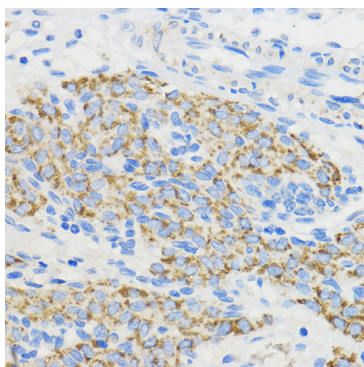
Validation Data



Western blot analysis of various lysates using BOLA3 Rabbit pAb (A15985) at 1:1000 dilution.
Secondary antibody: HRP-conjugated Goat anti-Rabbit IgG (H+L) (AS014) at 1:10000 dilution.
Lysates/proteins: 25µg per lane.
Blocking buffer: 3% nonfat dry milk in TBST.
Detection: ECL Enhanced Kit (RM00021).
Exposure time: 90s.



Immunohistochemistry analysis of paraffin-embedded Human oophoroma using BOLA3 Rabbit pAb (A15985) at dilution of 1:50 (40x lens). Microwave antigen retrieval performed with 0.01M PBS Buffer (pH 7.2) prior to IHC staining.



Immunohistochemistry analysis of paraffin-embedded Rat ovary using BOLA3 Rabbit pAb (A15985) at dilution of 1:50 (40x lens). Microwave antigen retrieval performed with 0.01M PBS Buffer (pH 7.2) prior to IHC staining.