

A16018

Leader in Biomolecular Solutions for Life Science



# PLA2G16 Rabbit pAb

Catalog No.: A16018

1 Publications

## Basic Information

### Observed MW

18kDa

### Calculated MW

18kDa

### Category

Polyclonal Antibody

### Applications

WB,ELISA

### Cross-Reactivity

Human

## Background

Enables N-acyltransferase activity; phospholipase A1 activity; and phospholipase A2 activity. Involved in N-acylphosphatidylethanolamine metabolic process. Predicted to be located in several cellular components, including lysosome; nuclear envelope; and peroxisome. Predicted to be active in cytoplasm. Biomarker of seminoma.

## Recommended Dilutions

**WB** 1:500 - 1:2000

**ELISA** Recommended starting concentration is 1 µg/mL. Please optimize the concentration based on your specific assay requirements.

## Immunogen Information

### Gene ID

11145

### Swiss Prot

P53816

### Immunogen

Recombinant protein (or fragment). This information is considered to be commercially sensitive.

### Synonyms

AdPLA; HRSL3; HRASLS3; HREV107; PLA2G16; PLAAT-3; H-REV107; HREV107-1; HREV107-3; H-REV107-1

## Contact

 [www.abclonal.com](http://www.abclonal.com)

## Product Information

### Source

Rabbit

### Isotype

IgG

### Purification

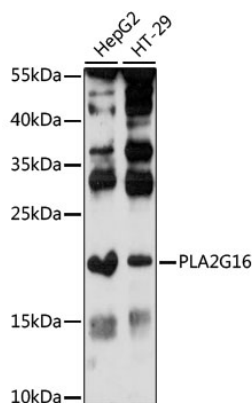
Affinity purification

### Storage

Store at -20°C. Avoid freeze / thaw cycles.

Buffer: PBS with 0.01% thimerosal, 50% glycerol, pH7.3.

## Validation Data



Western blot analysis of various lysates using PLA2G16 Rabbit pAb (A16018) at 1:1000 dilution.

Secondary antibody: HRP-conjugated Goat anti-Rabbit IgG (H+L) (AS014) at 1:10000 dilution.

Lysates/proteins: 25µg per lane.

Blocking buffer: 3% nonfat dry milk in TBST.

Detection: ECL Enhanced Kit (RM00021).

Exposure time: 90s.