

A16163

Leader in Biomolecular Solutions for Life Science



GPR62 Rabbit pAb

Catalog No.: A16163

Basic Information

Observed MW

39kDa

Calculated MW

38kDa

Category

Polyclonal Antibody

Applications

WB,ELISA

Cross-Reactivity

Human,Mouse,Rat

Background

Enables arrestin family protein binding activity. Involved in G protein-coupled receptor signaling pathway; inositol phosphate-mediated signaling; and positive regulation of cAMP-mediated signaling. Located in endosome and plasma membrane. Part of receptor complex.

Recommended Dilutions

WB 1:500 - 1:1000

ELISA Recommended starting concentration is 1 µg/mL. Please optimize the concentration based on your specific assay requirements.

Immunogen Information

Gene ID

118442

Swiss Prot

Q9BZJ7

Immunogen

Synthetic peptide. This information is considered to be commercially sensitive.

Synonyms

GPCR8; KPG_005; GPR62

Contact



www.abclonal.com

Product Information

Source

Rabbit

Isotype

IgG

Purification

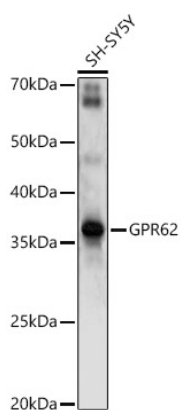
Affinity purification

Storage

Store at -20°C. Avoid freeze / thaw cycles.

Buffer: PBS with 0.01% thimerosal, 50% glycerol, pH7.3.

Validation Data



Western blot analysis of lysates from SH-SY5Y cells, using GPR62 Rabbit pAb (A16163) at 1:1000 dilution.

Secondary antibody: HRP-conjugated Goat anti-Rabbit IgG (H+L) (AS014) at 1:10000 dilution.

Lysates/proteins: 25µg per lane.

Blocking buffer: 3% nonfat dry milk in TBST.

Detection: ECL Enhanced Kit (RM00021).

Exposure time: 90s.