

A16167

Leader in Biomolecular Solutions for Life Science



S100A16 Rabbit pAb

Catalog No.: A16167

Basic Information

Observed MW

12kDa

Calculated MW

12kDa

Category

Polyclonal Antibody

Applications

WB,ELISA

Cross-Reactivity

Human,Mouse,Rat

Background

Enables calcium ion binding activity and protein homodimerization activity. Predicted to act upstream of or within response to calcium ion. Located in several cellular components, including cytosol; extracellular space; and nucleolus.

Recommended Dilutions

WB 1:500 - 1:2000

ELISA Recommended starting concentration is 1 µg/mL. Please optimize the concentration based on your specific assay requirements.

Immunogen Information

Gene ID

140576

Swiss Prot

Q96FQ6

Immunogen

Recombinant protein (or fragment). This information is considered to be commercially sensitive.

Synonyms

AAG13; S100F; DT1P1A7; S100A16

Contact

 www.abclonal.com

Product Information

Source

Rabbit

Isotype

IgG

Purification

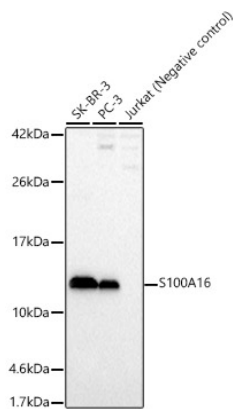
Affinity purification

Storage

Store at -20°C. Avoid freeze / thaw cycles.

Buffer: PBS containing 50% glycerol, preserved with proclin300 or sodium azide (as specified on the Certificate of Analysis), pH 7.3.

Validation Data



Western blot analysis of various lysates, using S100A16 Rabbit pAb (A16167) at 1:2000 dilution.
Secondary antibody: HRP-conjugated Goat anti-Rabbit IgG (H+L) (AS014) at 1:10000 dilution.
Lysates/proteins: 25µg per lane.
Blocking buffer: 3% nonfat dry milk in TBST.
Detection: ECL Basic Kit (RM00020).
Exposure time: 30s.