

A16384

Leader in Biomolecular Solutions for Life Science



IFI35 Rabbit pAb

Catalog No.: A16384

1 Publications

Basic Information

Observed MW

35kDa

Calculated MW

32kDa

Category

Polyclonal Antibody

Applications

WB,ELISA

Cross-Reactivity

Human,Mouse

Background

Enables identical protein binding activity. Involved in several processes, including macrophage activation involved in immune response; positive regulation of defense response; and regulation of signal transduction. Located in several cellular components, including cytosol; extracellular space; and nucleus.

Recommended Dilutions

WB 1:500 - 1:2000

ELISA Recommended starting concentration is 1 µg/mL. Please optimize the concentration based on your specific assay requirements.

Immunogen Information

Gene ID

3430

Swiss Prot

P80217

Immunogen

Recombinant protein (or fragment). This information is considered to be commercially sensitive.

Synonyms

IFP35; IFI35

Contact



www.abclonal.com

Product Information

Source

Rabbit

Isotype

IgG

Purification

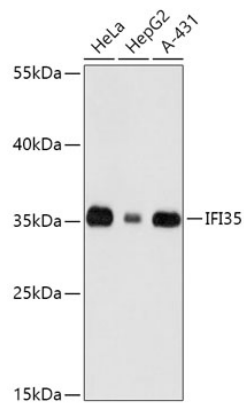
Affinity purification

Storage

Store at -20°C. Avoid freeze / thaw cycles.

Buffer: PBS with 0.01% thimerosal, 50% glycerol, pH7.3.

Validation Data



Western blot analysis of various lysates using IFI35 Rabbit pAb (A16384) at 1:1000 dilution.

Secondary antibody: HRP-conjugated Goat anti-Rabbit IgG (H+L) (AS014) at 1:10000 dilution.

Lysates/proteins: 25µg per lane.

Blocking buffer: 3% nonfat dry milk in TBST.

Detection: ECL Basic Kit (RM00020).

Exposure time: 30s.