

A16407

Leader in Biomolecular Solutions for Life Science



## NIT1 Rabbit pAb

Catalog No.: A16407

### Basic Information

#### Observed MW

34kDa

#### Calculated MW

36kDa

#### Category

Polyclonal Antibody

#### Applications

WB, ELISA

#### Cross-Reactivity

Rat

### Background

This gene encodes a member of the nitrilase protein family with homology to bacterial and plant nitrilases, enzymes that cleave nitriles and organic amides to the corresponding carboxylic acids plus ammonia. Multiple transcript variants encoding different isoforms have been found for this gene.

### Recommended Dilutions

**WB** 1:500 - 1:2000

**ELISA** Recommended starting concentration is 1 µg/mL. Please optimize the concentration based on your specific assay requirements.

### Immunogen Information

#### Gene ID

4817

#### Swiss Prot

Q86X76

#### Immunogen

Recombinant protein (or fragment). This information is considered to be commercially sensitive.

#### Synonyms

NIT1

### Contact

 [www.abclonal.com](http://www.abclonal.com)

### Product Information

#### Source

Rabbit

#### Isotype

IgG

#### Purification

Affinity purification

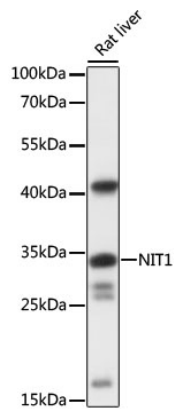
#### Storage

Store at -20°C. Avoid freeze / thaw cycles.

Buffer: PBS with 0.01% thimerosal, 50% glycerol, pH 7.3.

## Validation Data

---



Western blot analysis of lysates from rat liver, using NIT1 Rabbit pAb (A16407) at 1:1000 dilution.

Secondary antibody: HRP-conjugated Goat anti-Rabbit IgG (H+L) (AS014) at 1:10000 dilution.

Lysates/proteins: 25µg per lane.

Blocking buffer: 3% nonfat dry milk in TBST.

Detection: ECL Basic Kit (RM00020).

Exposure time: 1s.