

A16430

Leader in Biomolecular Solutions for Life Science



SLIT1 Rabbit pAb

Catalog No.: A16430

Basic Information

Observed MW

168kDa

Calculated MW

168kDa

Category

Polyclonal Antibody

Applications

WB, ELISA

Cross-Reactivity

Human

Background

Enables Roundabout binding activity. Involved in axon extension involved in axon guidance; motor neuron axon guidance; and negative chemotaxis. Predicted to be located in extracellular region. Predicted to be active in extracellular space.

Recommended Dilutions

WB 1:500 - 1:2000

ELISA Recommended starting concentration is 1 µg/mL. Please optimize the concentration based on your specific assay requirements.

Immunogen Information

Gene ID

6585

Swiss Prot

O75093

Immunogen

Recombinant protein (or fragment). This information is considered to be commercially sensitive.

Synonyms

MEGF4; SLIL1; SLIT3; SLIT-1; SLIT1

Contact



www.abclonal.com

Product Information

Source

Rabbit

Isotype

IgG

Purification

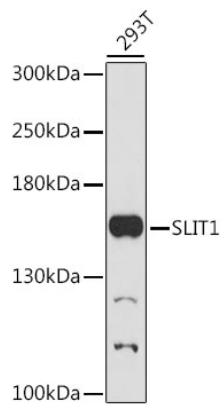
Affinity purification

Storage

Store at -20°C. Avoid freeze / thaw cycles.

Buffer: PBS with 0.01% thimerosal, 50% glycerol, pH 7.3.

Validation Data



Western blot analysis of lysates from 293T cells, using SLIT1 Rabbit pAb (A16430) at 1:1000 dilution.
Secondary antibody: HRP-conjugated Goat anti-Rabbit IgG (H+L) (AS014) at 1:10000 dilution.
Lysates/proteins: 25µg per lane.
Blocking buffer: 3% nonfat dry milk in TBST.
Detection: ECL Basic Kit (RM00020).
Exposure time: 3min.