

A16470

Leader in Biomolecular Solutions for Life Science



IKK ϵ Rabbit pAb

Catalog No.: A16470

1 Publications

Basic Information

Observed MW

110kDa

Calculated MW

80kDa

Category

Polyclonal Antibody

Applications

WB,IP,ELISA

Cross-Reactivity

Human,Mouse

Background

IKBKE is a noncanonical I-kappa-B (see MIM 164008) kinase (IKK) that is essential for regulating antiviral signaling pathways. IKBKE has also been identified as a breast cancer (MIM 114480) oncogene and is amplified and overexpressed in over 30% of breast carcinomas and breast cancer cell lines (Hutti et al., 2009 [PubMed 19481526]).

Recommended Dilutions

WB 1:500 - 1:2000

IP 0.5 μ g-4 μ g antibody for
200 μ g-400 μ g extracts
of whole cells

ELISA Recommended starting
concentration is 1
 μ g/mL. Please optimize
the concentration
based on your specific
assay requirements.

Immunogen Information

Gene ID

9641

Swiss Prot

Q14164

Immunogen

Recombinant protein (or fragment). This information is considered to be commercially sensitive.

Synonyms

IKKE; IKKI; IKK-E; IKK-i; IKK ϵ

Product Information

Source

Rabbit

Isotype

IgG

Purification

Affinity purification

Storage

Store at -20°C. Avoid freeze / thaw cycles.

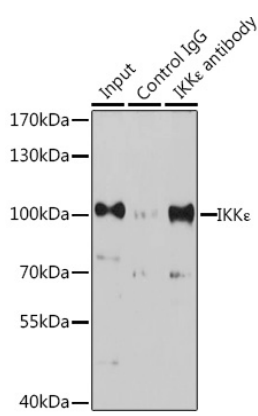
Buffer: PBS with 0.02% sodium azide, 50% glycerol, pH7.3.

Contact



www.abclonal.com

Validation Data



Immunoprecipitation analysis of 200 µg extracts of K-562 cells, using 3 µg IKKε antibody (A16470). Western blot was performed from the immunoprecipitate using IKKε antibody (A16470) at a dilution of 1:1000.