

A1647

Leader in Biomolecular Solutions for Life Science



# Fetuin A/AHSG Rabbit pAb

Catalog No.: A1647 **1 Publications**

## Basic Information

### Observed MW

68kDa

### Calculated MW

39kDa

### Category

Polyclonal Antibody

### Applications

WB,ELISA

### Cross-Reactivity

Human

## Background

The protein encoded by this gene is a negatively-charged serum glycoprotein that is synthesized by hepatocytes. The encoded protein consists of two polypeptide chains, which are both cleaved from a proprotein encoded from a single mRNA. It is involved in several processes, including endocytosis, brain development, and the formation of bone tissue. Defects in this gene are a cause of susceptibility to leanness.

## Recommended Dilutions

**WB** 1:500 - 1:2000

**ELISA** Recommended starting concentration is 1 µg/mL. Please optimize the concentration based on your specific assay requirements.

## Immunogen Information

**Gene ID**  
197

**Swiss Prot**  
P02765

### Immunogen

Recombinant protein (or fragment). This information is considered to be commercially sensitive.

### Synonyms

AHS; A2HS; HSGA; APMR1; FETUA; Fetuin A/AHSG

## Contact

 [www.abclonal.com](http://www.abclonal.com)

## Product Information

**Source**  
Rabbit

**Isotype**  
IgG

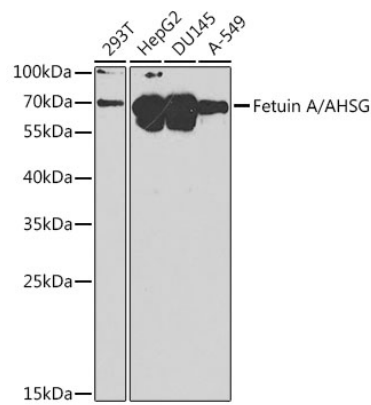
**Purification**  
Affinity purification

### Storage

Store at -20°C. Avoid freeze / thaw cycles.

Buffer: PBS with 0.02% sodium azide, 50% glycerol, pH7.3.

# Validation Data



Western blot analysis of various lysates using Fetuin A/AHSG Rabbit pAb (A1647) at 1:1000 dilution.  
Secondary antibody: HRP-conjugated Goat anti-Rabbit IgG (H+L) (AS014) at 1:10000 dilution.  
Lysates/proteins: 25µg per lane.  
Blocking buffer: 3% nonfat dry milk in TBST.