

A16530

Leader in Biomolecular Solutions for Life Science



## POP5 Rabbit pAb

Catalog No.: A16530

### Basic Information

#### Observed MW

19kDa

#### Calculated MW

19kDa

#### Category

Polyclonal Antibody

#### Applications

WB,ELISA

#### Cross-Reactivity

Human,Rat

### Background

Enables ribonuclease P RNA binding activity. Contributes to ribonuclease P activity. Involved in tRNA 5'-leader removal. Located in nucleolus. Part of multimeric ribonuclease P complex and ribonuclease MRP complex.

### Recommended Dilutions

**WB** 1:500 - 1:2000

**ELISA** Recommended starting concentration is 1 µg/mL. Please optimize the concentration based on your specific assay requirements.

### Immunogen Information

#### Gene ID

51367

#### Swiss Prot

Q969H6

#### Immunogen

Synthetic peptide. This information is considered to be commercially sensitive.

#### Synonyms

RPP2; RPP20; hPop5; HSPC004; POP5

### Contact



[www.abclonal.com](http://www.abclonal.com)

### Product Information

#### Source

Rabbit

#### Isotype

IgG

#### Purification

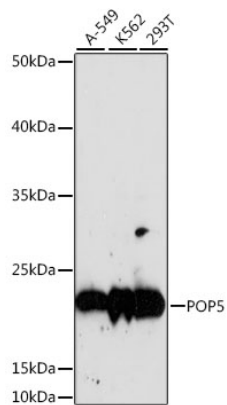
Affinity purification

#### Storage

Store at -20°C. Avoid freeze / thaw cycles.

Buffer: PBS with 0.01% thimerosal, 50% glycerol, pH7.3.

## Validation Data



Western blot analysis of various lysates using POP5 Rabbit pAb (A16530) at 1:1000 dilution.

Secondary antibody: HRP-conjugated Goat anti-Rabbit IgG (H+L) (AS014) at 1:10000 dilution.

Lysates/proteins: 25µg per lane.

Blocking buffer: 3% nonfat dry milk in TBST.

Detection: ECL Basic Kit (RM00020).

Exposure time: 60s.