

A1685

Leader in Biomolecular Solutions for Life Science



BARD1 Rabbit pAb

Catalog No.: A1685

3 Publications

Basic Information

Observed MW

86kDa

Calculated MW

14kDa/75kDa/84kDa/86kDa

Category

Polyclonal Antibody

Applications

WB, ELISA

Cross-Reactivity

Human, Mouse, Rat

Background

Predicted to enable RNA binding activity; protein heterodimerization activity; and protein homodimerization activity. Predicted to contribute to ubiquitin-protein transferase activity. Predicted to be involved in several processes, including negative regulation of protein export from nucleus; protein K6-linked ubiquitination; and regulation of apoptotic process. Predicted to act upstream of or within DNA repair. Located in nucleus. Is expressed in genitourinary system; limb; and spleen. Used to study breast cancer. Human ortholog(s) of this gene implicated in breast cancer and ovarian cancer. Orthologous to human BARD1 (BRCA1 associated RING domain 1).

Recommended Dilutions

WB 1:500 - 1:2000

ELISA Recommended starting concentration is 1 µg/mL. Please optimize the concentration based on your specific assay requirements.

Immunogen Information

Gene ID

12021

Swiss Prot

Immunogen

Recombinant protein (or fragment). This information is considered to be commercially sensitive.

Synonyms

BARD1

Contact

 www.abclonal.com

Product Information

Source

Rabbit

Isotype

IgG

Purification

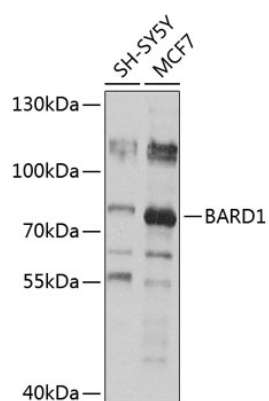
Affinity purification

Storage

Store at -20°C. Avoid freeze / thaw cycles.

Buffer: PBS with 0.02% sodium azide, 50% glycerol, pH 7.3.

Validation Data



Western blot analysis of various lysates using BARD1 Rabbit pAb (A1685) at 1:1000 dilution.

Secondary antibody: HRP-conjugated Goat anti-Rabbit IgG (H+L) (AS014) at 1:10000 dilution.

Lysates/proteins: 25µg per lane.

Blocking buffer: 3% nonfat dry milk in TBST.

Detection: ECL Basic Kit (RM00020).

Exposure time: 30s.