

A17014

Leader in Biomolecular Solutions for Life Science



ARHGEF5 Rabbit pAb

Catalog No.: A17014

Basic Information

Observed MW

Refer to figures

Calculated MW

177kDa

Category

Polyclonal Antibody

Applications

IHC-P,ELISA

Cross-Reactivity

Human,Mouse,Rat

Background

Rho GTPases play a fundamental role in numerous cellular processes initiated by extracellular stimuli that work through G protein coupled receptors. The encoded protein may form a complex with G proteins and stimulate Rho-dependent signals. This protein may be involved in the control of cytoskeletal organization.

Recommended Dilutions

IHC-P 1:50 - 1:200

ELISA Recommended starting concentration is 1 µg/mL. Please optimize the concentration based on your specific assay requirements.

Immunogen Information

Gene ID

7984

Swiss Prot

Q12774

Immunogen

Recombinant protein (or fragment). This information is considered to be commercially sensitive.

Synonyms

P60; TIM; GEF5; TIM1; ARHGEF5

Contact



www.abclonal.com

Product Information

Source

Rabbit

Isotype

IgG

Purification

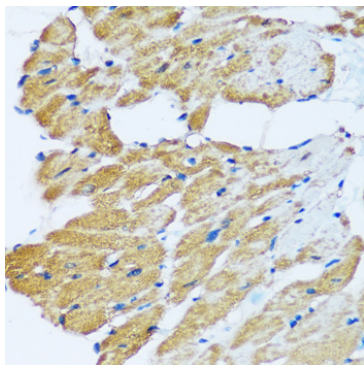
Affinity purification

Storage

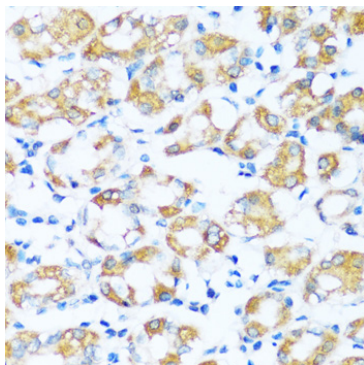
Store at -20°C. Avoid freeze / thaw cycles.

Buffer: PBS with 0.01% thimerosal, 50% glycerol, pH7.3.

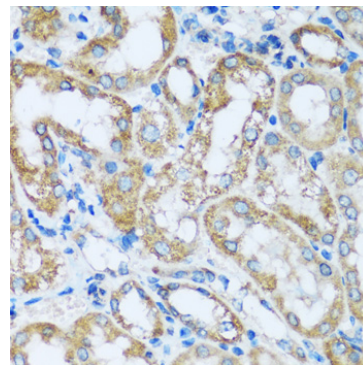
Validation Data



Immunohistochemistry analysis of paraffin-embedded Rat heart using ARHGEF5 Rabbit pAb (A17014) at dilution of 1:100 (40x lens). Microwave antigen retrieval performed with 0.01M PBS Buffer (pH 7.2) prior to IHC staining.



Immunohistochemistry analysis of paraffin-embedded Human stomach using ARHGEF5 Rabbit pAb (A17014) at dilution of 1:100 (40x lens). Microwave antigen retrieval performed with 0.01M PBS Buffer (pH 7.2) prior to IHC staining.



Immunohistochemistry analysis of paraffin-embedded Mouse kidney using ARHGEF5 Rabbit pAb (A17014) at dilution of 1:100 (40x lens). Microwave antigen retrieval performed with 0.01M PBS Buffer (pH 7.2) prior to IHC staining.