

A17096

Leader in Biomolecular Solutions for Life Science



CREBBP Rabbit pAb

Catalog No.: A17096

3 Publications

Basic Information

Observed MW

290kDa

Calculated MW

172kDa

Category

Polyclonal Antibody

Applications

WB, ELISA

Cross-Reactivity

Mouse, Rat

Background

Enables several functions, including DNA-binding transcription factor binding activity; TFIIB-class transcription factor binding activity; and disordered domain specific binding activity. Involved in several processes, including cellular response to virus; face morphogenesis; and negative regulation of interferon-beta production. Acts upstream of or within cellular response to hepatocyte growth factor stimulus; germ-line stem cell population maintenance; and regulation of gene expression. Located in chromatin and nucleus. Part of RNA polymerase II transcription regulator complex; histone acetyltransferase complex; and outer kinetochore. Is expressed in several structures, including alimentary system; embryo ectoderm; genitourinary system; heart; and skin. Used to study Rubinstein-Taybi syndrome; acute myeloid leukemia; autism spectrum disorder; and myelodysplastic syndrome. Human ortholog(s) of this gene implicated in Rubinstein-Taybi syndrome; acute lymphoblastic leukemia; and acute myeloid leukemia. Orthologous to human CREBBP (CREB binding protein).

Recommended Dilutions

WB 1:500 - 1:2000

ELISA Recommended starting concentration is 1 µg/mL. Please optimize the concentration based on your specific assay requirements.

Immunogen Information

Gene ID

12914

Swiss Prot

Q6GQV9

Immunogen

Recombinant protein (or fragment). This information is considered to be commercially sensitive.

Synonyms

CBP; KAT3A; CBP/p300; p300/CBP; CREBBP

Contact

 www.abclonal.com

Product Information

Source

Rabbit

Isotype

IgG

Purification

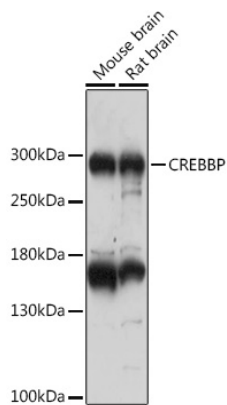
Affinity purification

Storage

Store at -20°C. Avoid freeze / thaw cycles.

Buffer: PBS with 0.02% sodium azide, 50% glycerol, pH 7.3.

Validation Data



Western blot analysis of various lysates using CREBBP Rabbit pAb (A17096) at 1:3000 dilution.

Secondary antibody: HRP-conjugated Goat anti-Rabbit IgG (H+L) (AS014) at 1:10000 dilution.

Lysates/proteins: 25µg per lane.

Blocking buffer: 3% nonfat dry milk in TBST.

Detection: ECL Basic Kit (RM00020).

Exposure time: 30s.