

A17106

Leader in Biomolecular Solutions for Life Science



# KANK1 Rabbit pAb

Catalog No.: A17106

## Basic Information

### Observed MW

Refer to figures

### Calculated MW

147kDa

### Category

Polyclonal Antibody

### Applications

IF/ICC,ELISA

### Cross-Reactivity

Mouse

## Background

The protein encoded by this gene belongs to the Kank family of proteins, which contain multiple ankyrin repeat domains. This family member functions in cytoskeleton formation by regulating actin polymerization. This gene is a candidate tumor suppressor for renal cell carcinoma. Mutations in this gene cause cerebral palsy spastic quadriplegic type 2, a central nervous system development disorder. A t(5;9) translocation results in fusion of the platelet-derived growth factor receptor beta gene (PDGFRB) on chromosome 5 with this gene in a myeloproliferative neoplasm featuring severe thrombocytopenia. Alternative splicing of this gene results in multiple transcript variants. A related pseudogene has been identified on chromosome 20.

## Recommended Dilutions

IF/ICC 1:50 - 1:200

ELISA Recommended starting concentration is 1 µg/mL. Please optimize the concentration based on your specific assay requirements.

## Immunogen Information

### Gene ID

23189

### Swiss Prot

Q14678

### Immunogen

Synthetic peptide. This information is considered to be commercially sensitive.

### Synonyms

KANK; CPSQ2; ANKRD15; KANK1

## Contact

 [www.abclonal.com](http://www.abclonal.com)

## Product Information

### Source

Rabbit

### Isotype

IgG

### Purification

Affinity purification

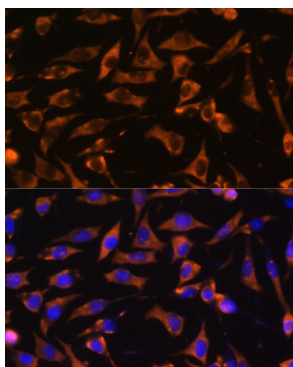
### Storage

Store at -20°C. Avoid freeze / thaw cycles.

Buffer: PBS with 0.01% thimerosal, 50% glycerol, pH7.3.

## Validation Data

---



Immunofluorescence analysis of L929 cells using KANK1 Rabbit pAb (A17106) at dilution of 1:100. Blue: DAPI for nuclear staining.