

A17144

Leader in Biomolecular Solutions for Life Science



CPSF1 Rabbit pAb

Catalog No.: A17144

2 Publications

Basic Information

Observed MW

170kDa/185kDa

Calculated MW

161kDa

Category

Polyclonal Antibody

Applications

WB, ELISA

Cross-Reactivity

Human, Mouse

Background

Cleavage and polyadenylation specificity factor (CPSF) is a multisubunit complex that plays a central role in 3-prime processing of pre-mRNAs. CPSF recognizes the AAUAAA signal in the pre-mRNA and interacts with other proteins to facilitate both RNA cleavage and poly(A) synthesis. CPSF1 is the largest subunit of the CPSF complex (Murthy and Manley, 1995 [PubMed 7590244]).

Recommended Dilutions

WB 1:500 - 1:2000

ELISA Recommended starting concentration is 1 µg/mL. Please optimize the concentration based on your specific assay requirements.

Immunogen Information

Gene ID

29894

Swiss Prot

Q10570

Immunogen

Recombinant protein (or fragment). This information is considered to be commercially sensitive.

Synonyms

MYP27; CPSF160; P/cl.18; HSU37012; CPSF1

Contact



www.abclonal.com

Product Information

Source

Rabbit

Isotype

IgG

Purification

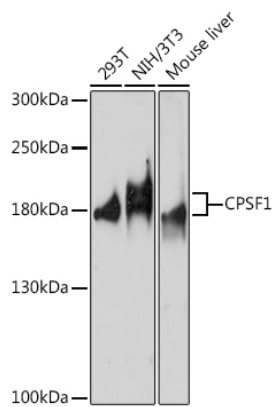
Affinity purification

Storage

Store at -20°C. Avoid freeze / thaw cycles.

Buffer: PBS with 0.01% thimerosal, 50% glycerol, pH 7.3.

Validation Data



Western blot analysis of various lysates using CPSF1 Rabbit pAb (A17144) at 1:1000 dilution.
Secondary antibody: HRP-conjugated Goat anti-Rabbit IgG (H+L) (AS014) at 1:10000 dilution.
Lysates/proteins: 25µg per lane.
Blocking buffer: 3% nonfat dry milk in TBST.
Detection: ECL Basic Kit (RM00020).
Exposure time: 60s.