

A17184

Leader in Biomolecular Solutions for Life Science



AJAP1 Rabbit pAb

Catalog No.: A17184

Basic Information

Observed MW

45kDa

Calculated MW

45kDa

Category

Polyclonal Antibody

Applications

WB,ELISA

Cross-Reactivity

Human,Mouse,Rat

Background

Enables beta-catenin binding activity. Involved in negative regulation of cell-matrix adhesion; negative regulation of wound healing; and regulation of polarized epithelial cell differentiation. Located in several cellular components, including adherens junction; basolateral plasma membrane; and cell-cell contact zone. Is spanning component of plasma membrane.

Recommended Dilutions

WB 1:500 - 1:2000

ELISA Recommended starting concentration is 1 µg/mL. Please optimize the concentration based on your specific assay requirements.

Immunogen Information

Gene ID

55966

Swiss Prot

Q9UKB5

Immunogen

Synthetic peptide. This information is considered to be commercially sensitive.

Synonyms

MOT8; SHREW1; SHREW-1; AJAP1

Contact

 www.abclonal.com

Product Information

Source

Rabbit

Isotype

IgG

Purification

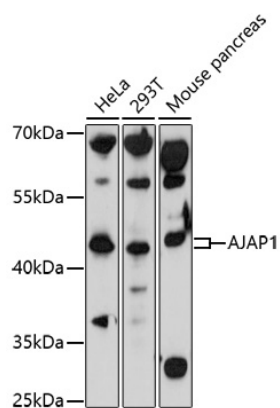
Affinity purification

Storage

Store at -20°C. Avoid freeze / thaw cycles.

Buffer: PBS with 0.01% thimerosal, 50% glycerol, pH7.3.

Validation Data



Western blot analysis of various lysates using AJAP1 Rabbit pAb (A17184) at 1:1000 dilution.
Secondary antibody: HRP-conjugated Goat anti-Rabbit IgG (H+L) (AS014) at 1:10000 dilution.
Lysates/proteins: 25µg per lane.
Blocking buffer: 3% nonfat dry milk in TBST.
Detection: ECL Basic Kit (RM00020).
Exposure time: 30s.