

A17210

Leader in Biomolecular Solutions for Life Science



CAMKV Rabbit pAb

Catalog No.: A17210

Basic Information

Observed MW

54kDa

Calculated MW

54kDa

Category

Polyclonal Antibody

Applications

WB,IF/ICC,ELISA

Cross-Reactivity

Human,Mouse,Rat

Background

Predicted to enable calmodulin binding activity and calmodulin-dependent protein kinase activity. Predicted to be involved in peptidyl-serine phosphorylation. Predicted to be located in cytoplasmic vesicle membrane and plasma membrane. Predicted to be active in glutamatergic synapse and postsynapse.

Recommended Dilutions

WB 1:500 - 1:2000

IF/ICC 1:50 - 1:200

ELISA Recommended starting concentration is 1 µg/mL. Please optimize the concentration based on your specific assay requirements.

Immunogen Information

Gene ID

79012

Swiss Prot

Q8NCB2

Immunogen

Recombinant protein (or fragment). This information is considered to be commercially sensitive.

Synonyms

1G5; VACAMKL; CAMKV

Contact

 www.abclonal.com

Product Information

Source

Rabbit

Isotype

IgG

Purification

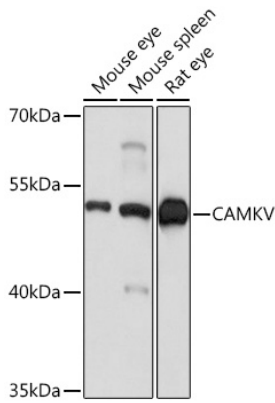
Affinity purification

Storage

Store at -20°C. Avoid freeze / thaw cycles.

Buffer: PBS with 0.01% thimerosal, 50% glycerol, pH7.3.

Validation Data



Western blot analysis of various lysates using CAMKV Rabbit pAb (A17210) at 1:1000 dilution.

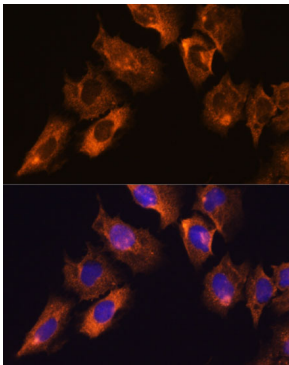
Secondary antibody: HRP-conjugated Goat anti-Rabbit IgG (H+L) (AS014) at 1:10000 dilution.

Lysates/proteins: 25µg per lane.

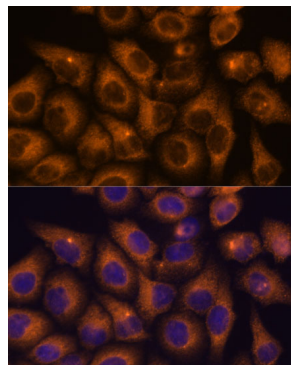
Blocking buffer: 3% nonfat dry milk in TBST.

Detection: ECL Basic Kit (RM00020).

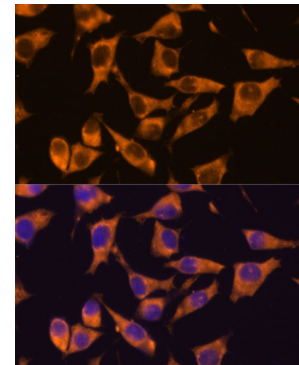
Exposure time: 1s.



Immunofluorescence analysis of C6 cells using CAMKV Rabbit pAb (A17210) at dilution of 1:100. Secondary antibody: Cy3-conjugated Goat anti-Rabbit IgG (H+L) (AS007) at 1:500 dilution. Blue: DAPI for nuclear staining.



Immunofluorescence analysis of HeLa cells using CAMKV Rabbit pAb (A17210) at dilution of 1:100. Secondary antibody: Cy3-conjugated Goat anti-Rabbit IgG (H+L) (AS007) at 1:500 dilution. Blue: DAPI for nuclear staining.



Immunofluorescence analysis of L929 cells using CAMKV Rabbit pAb (A17210) at dilution of 1:100. Secondary antibody: Cy3-conjugated Goat anti-Rabbit IgG (H+L) (AS007) at 1:500 dilution. Blue: DAPI for nuclear staining.