

A17223

Leader in Biomolecular Solutions for Life Science



MIXL1 Rabbit pAb

Catalog No.: A17223

4 Publications

Basic Information

Observed MW

23kDa

Calculated MW

25kDa

Category

Polyclonal Antibody

Applications

WB,ELISA

Cross-Reactivity

Human,Mouse,Rat

Background

Enables RNA polymerase II-specific DNA-binding transcription factor binding activity and sequence-specific double-stranded DNA binding activity. Predicted to be involved in several processes, including endodermal cell differentiation; hematopoietic progenitor cell differentiation; and positive regulation of mesoderm development. Predicted to act upstream of or within cell migration involved in gastrulation and hemopoiesis. Located in nucleoplasm.

Recommended Dilutions

WB 1:500 - 1:2000

ELISA Recommended starting concentration is 1 µg/mL. Please optimize the concentration based on your specific assay requirements.

Immunogen Information

Gene ID

83881

Swiss Prot

Q9H2W2

Immunogen

Synthetic peptide. This information is considered to be commercially sensitive.

Synonyms

MIX; MIXL; MILD1; MIXL1

Contact

 www.abclonal.com

Product Information

Source

Rabbit

Isotype

IgG

Purification

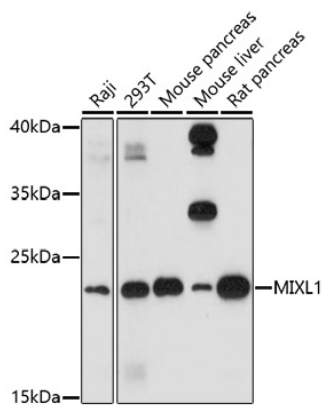
Affinity purification

Storage

Store at -20°C. Avoid freeze / thaw cycles.

Buffer: PBS with 0.01% thimerosal, 50% glycerol, pH7.3.

Validation Data



Western blot analysis of various lysates using MIXL1 Rabbit pAb (A17223) at 1:1000 dilution.
Secondary antibody: HRP-conjugated Goat anti-Rabbit IgG (H+L) (AS014) at 1:10000 dilution.
Lysates/proteins: 25µg per lane.
Blocking buffer: 3% nonfat dry milk in TBST.
Detection: ECL Basic Kit (RM00020).
Exposure time: 5min.