

A17228

Leader in Biomolecular Solutions for Life Science



RETNLB Rabbit pAb

Catalog No.: A17228

2 Publications

Basic Information

Observed MW

13kDa

Calculated MW

12kDa

Category

Polyclonal Antibody

Applications

WB,ELISA

Cross-Reactivity

Human,Mouse

Background

Predicted to enable hormone activity. Involved in epithelial cell proliferation. Predicted to be located in extracellular region. Predicted to be active in extracellular space.

Recommended Dilutions

WB 1:500 - 1:2000

ELISA Recommended starting concentration is 1 µg/mL. Please optimize the concentration based on your specific assay requirements.

Immunogen Information

Gene ID

84666

Swiss Prot

Q9BQ08

Immunogen

Recombinant protein (or fragment). This information is considered to be commercially sensitive.

Synonyms

XCP2; FIZZ1; FIZZ2; HXCP2; RELMb; RELMbeta; RELM-beta; RETNLB

Contact



www.abclonal.com

Product Information

Source

Rabbit

Isotype

IgG

Purification

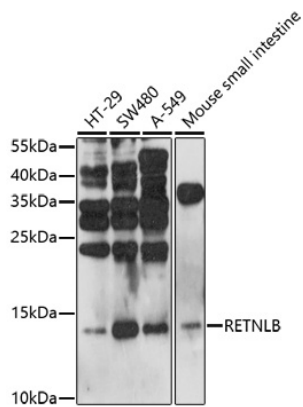
Affinity purification

Storage

Store at -20°C. Avoid freeze / thaw cycles.

Buffer: PBS with 0.01% thimerosal, 50% glycerol, pH7.3.

Validation Data



Western blot analysis of various lysates using RETNLB Rabbit pAb (A17228) at 1:1000 dilution.

Secondary antibody: HRP-conjugated Goat anti-Rabbit IgG (H+L) (AS014) at 1:10000 dilution.

Lysates/proteins: 25µg per lane.

Blocking buffer: 3% nonfat dry milk in TBST.

Detection: ECL Basic Kit (RM00020).

Exposure time: 90s.