

A17342

Leader in Biomolecular Solutions for Life Science



UBA2 Rabbit pAb

Catalog No.: A17342

Basic Information

Observed MW

90kDa

Calculated MW

71kDa

Category

Polyclonal Antibody

Applications

WB, ELISA

Cross-Reactivity

Rat

Background

Posttranslational modification of proteins by the addition of the small protein SUMO (see SUMO1; MIM 601912), or sumoylation, regulates protein structure and intracellular localization. SAE1 (MIM 613294) and UBA2 form a heterodimer that functions as a SUMO-activating enzyme for the sumoylation of proteins (Okuma et al., 1999 [PubMed 9920803]).

Recommended Dilutions

WB 1:500 - 1:1000

ELISA Recommended starting concentration is 1 µg/mL. Please optimize the concentration based on your specific assay requirements.

Immunogen Information

Gene ID

10054

Swiss Prot

Q9UBT2

Immunogen

Recombinant protein (or fragment). This information is considered to be commercially sensitive.

Synonyms

ARX; SAE2; ACCES; HRIHFB2115; UBA2

Contact

 www.abclonal.com

Product Information

Source

Rabbit

Isotype

IgG

Purification

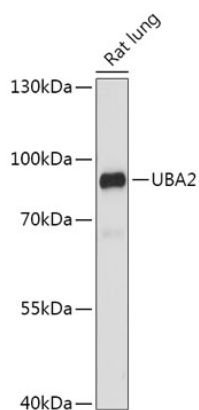
Affinity purification

Storage

Store at -20°C. Avoid freeze / thaw cycles.

Buffer: PBS with 0.01% thimerosal, 50% glycerol, pH7.3.

Validation Data



Western blot analysis of lysates from Rat lung, using UBA2 Rabbit pAb (A17342) at 1:1000 dilution.
Secondary antibody: HRP-conjugated Goat anti-Rabbit IgG (H+L) (AS014) at 1:10000 dilution.
Lysates/proteins: 25µg per lane.
Blocking buffer: 3% nonfat dry milk in TBST.
Detection: ECL Basic Kit (RM00020).
Exposure time: 10s.