

A17365

Leader in Biomolecular Solutions for Life Science



CAPRIN2 Rabbit pAb

Catalog No.: A17365

Basic Information

Observed MW

126kDa

Calculated MW

126kDa

Category

Polyclonal Antibody

Applications

WB,ELISA

Cross-Reactivity

Human,Rat

Background

The protein encoded by this gene may regulate the transport of mRNA. It may play a role in the differentiation of erythroblasts. Multiple transcript variants encoding different isoforms have been found for this gene.

Recommended Dilutions

WB 1:500 - 1:2000

ELISA Recommended starting concentration is 1 µg/mL. Please optimize the concentration based on your specific assay requirements.

Immunogen Information

Gene ID

65981

Swiss Prot

Q6IMN6

Immunogen

Recombinant protein (or fragment). This information is considered to be commercially sensitive.

Synonyms

EEG1; EEG-1; C1QDC1; RNG140; CAPRIN2

Contact



www.abclonal.com

Product Information

Source

Rabbit

Isotype

IgG

Purification

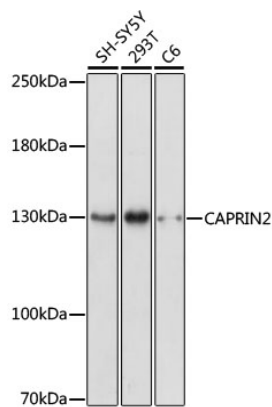
Affinity purification

Storage

Store at -20°C. Avoid freeze / thaw cycles.

Buffer: PBS with 0.01% thimerosal, 50% glycerol, pH7.3.

Validation Data



Western blot analysis of various lysates using CAPRIN2 Rabbit pAb (A17365) at 1:1000 dilution.
Secondary antibody: HRP-conjugated Goat anti-Rabbit IgG (H+L) (AS014) at 1:10000 dilution.
Lysates/proteins: 25µg per lane.
Blocking buffer: 3% nonfat dry milk in TBST.
Detection: ECL Enhanced Kit (RM00021).
Exposure time: 3min.