

A17424

Leader in Biomolecular Solutions for Life Science



LC3B Mouse mAb

Catalog No.: A17424

15 Publications

Basic Information

Observed MW

14-15kDa

Calculated MW

15kDa

Category

Monoclonal Antibody

Applications

WB,ELISA

Cross-Reactivity

Human,Mouse,Rat

CloneNo number

AMC0036

Background

The product of this gene is a subunit of neuronal microtubule-associated MAP1A and MAP1B proteins, which are involved in microtubule assembly and important for neurogenesis. Studies on the rat homolog implicate a role for this gene in autophagy, a process that involves the bulk degradation of cytoplasmic component.

Recommended Dilutions

WB 1:1000 - 1:2000

ELISA Recommended starting concentration is 1 µg/mL. Please optimize the concentration based on your specific assay requirements.

Immunogen Information

Gene ID

81631

Swiss Prot

Q9GZQ8

Immunogen

Recombinant protein (or fragment). This information is considered to be commercially sensitive.

Synonyms

LC3B; ATG8F; MAP1LC3B-a; MAP1A/1BLC3

Contact



www.abclonal.com

Product Information

Source

Mouse

Isotype

IgG2a,Kappa

Purification

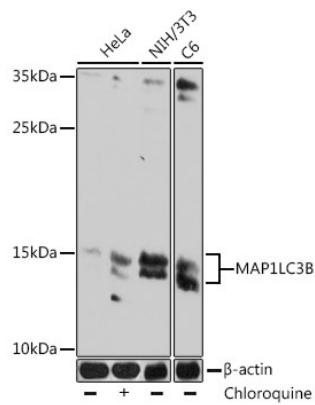
Affinity purification

Storage

Store at -20°C. Avoid freeze / thaw cycles.

Buffer: PBS containing 50% glycerol, preserved with proclin300 or sodium azide (as specified on the Certificate of Analysis), pH 7.3.

Validation Data



Western blot analysis of various lysates using LC3B Mouse mAb (A17424) at 1:1000 dilution. HeLa cells were treated with Chloroquine (50 μ M) at 37°C for 20 hours. Secondary antibody: HRP-conjugated Goat anti-Mouse IgG (H+L) (AS003) at 1:10000 dilution.

Lysates/proteins: 25 μ g per lane.

Blocking buffer: 3% nonfat dry milk in TBST.

Detection: ECL Basic Kit (RM00020).

Exposure time: 180s.