

A17553

Leader in Biomolecular Solutions for Life Science



# NUF2 Rabbit mAb

Catalog No.: A17553

Recombinant

1 Publications

## Basic Information

### Observed MW

54kDa

### Calculated MW

54kDa

### Category

SMab Recombinant Monoclonal  
Antibody

### Applications

WB,ELISA

### Cross-Reactivity

Human

### CloneNo number

ARC2157

## Background

This gene encodes a protein that is highly similar to yeast Nuf2, a component of a conserved protein complex associated with the centromere. Yeast Nuf2 disappears from the centromere during meiotic prophase when centromeres lose their connection to the spindle pole body, and plays a regulatory role in chromosome segregation. The encoded protein is found to be associated with centromeres of mitotic HeLa cells, which suggests that this protein is a functional homolog of yeast Nuf2. Alternatively spliced transcript variants that encode the same protein have been described.

## Recommended Dilutions

WB 1:100- 1:500

## Immunogen Information

### Gene ID

83540

### Swiss Prot

Q9BZD4

### Immunogen

A synthetic peptide corresponding to a sequence within amino acids 1-100 of human NUF2 (Q9BZD4).

### Synonyms

CDCA1; CT106; NUF2R; NUF2

## Contact



[www.abclonal.com](http://www.abclonal.com)

## Product Information

### Source

Rabbit

### Isotype

IgG

### Purification

Affinity purification

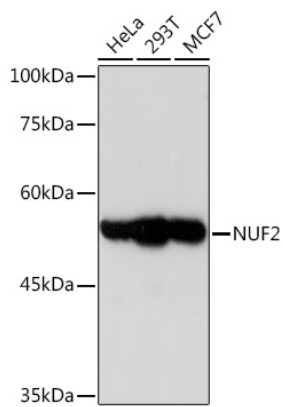
### Storage

Store at -20°C. Avoid freeze / thaw cycles.

Buffer: PBS with 0.02% sodium azide,0.05% BSA,50% glycerol,pH7.3.

## Validation Data

---



Western blot analysis of extracts of various cell lines, using NUF2 Rabbit mAb (A17553) at 1:1000 dilution.

Secondary antibody: HRP Goat Anti-Rabbit IgG (H+L) (AS014) at 1:10000 dilution.

Lysates/proteins: 25µg per lane.

Blocking buffer: 3% nonfat dry milk in TBST.

Detection: ECL Enhanced Kit (RM00021).

Exposure time: 180s.