

A17585

Leader in Biomolecular Solutions for Life Science



LIMD1 Rabbit pAb

Catalog No.: A17585

Basic Information

Observed MW

72kDa

Calculated MW

72kDa

Category

Polyclonal Antibody

Applications

WB,ELISA

Cross-Reactivity

Human,Mouse

Background

Predicted to enable transcription corepressor activity. Involved in several processes, including negative regulation of hippo signaling; regulation of gene expression; and response to hypoxia. Acts upstream of or within P-body assembly and gene silencing by miRNA. Located in several cellular components, including P-body; adherens junction; and focal adhesion. Part of RISC complex.

Recommended Dilutions

WB 1:500 - 1:2000

ELISA Recommended starting concentration is 1 µg/mL. Please optimize the concentration based on your specific assay requirements.

Immunogen Information

Gene ID

8994

Swiss Prot

Q9UGP4

Immunogen

Recombinant protein (or fragment). This information is considered to be commercially sensitive.

Synonyms

LIMD1

Contact



www.abclonal.com

Product Information

Source

Rabbit

Isotype

IgG

Purification

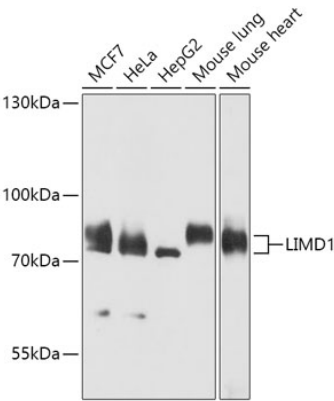
Affinity purification

Storage

Store at -20°C. Avoid freeze / thaw cycles.

Buffer: PBS with 0.01% thimerosal, 50% glycerol, pH7.3.

Validation Data



Western blot analysis of various lysates using LIMD1 Rabbit pAb (A17585) at 1:1000 dilution.
Secondary antibody: HRP-conjugated Goat anti-Rabbit IgG (H+L) (AS014) at 1:10000 dilution.
Lysates/proteins: 25µg per lane.
Blocking buffer: 3% nonfat dry milk in TBST.
Detection: ECL Basic Kit (RM00020).
Exposure time: 10s.