

A17737

Leader in Biomolecular Solutions for Life Science



POGLUT1 Rabbit pAb

Catalog No.: A17737

Basic Information

Observed MW

46kDa

Calculated MW

46kDa

Category

Polyclonal Antibody

Applications

WB,IF/ICC,ELISA

Cross-Reactivity

Mouse,Rat

Background

This gene encodes a protein with both O-glucosyltransferase and O-xylosyltransferase activity which localizes to the lumen of the endoplasmic reticulum. This protein has a carboxy-terminal KTEL motif which is predicted to function as an endoplasmic reticulum retention signal. This gene is an essential regulator of Notch signalling and likely plays a role in cell fate and tissue formation during development. It may also play a role in the pathogenesis of leukemia. Mutations in this gene have been associated with the autosomal dominant genodermatosis Dowling-Degos disease 4. Alternative splicing results in multiple transcript variants.

Recommended Dilutions

WB 1:500 - 1:2000

IF/ICC 1:50 - 1:200

ELISA Recommended starting concentration is 1 µg/mL. Please optimize the concentration based on your specific assay requirements.

Immunogen Information

Gene ID

56983

Swiss Prot

Q8NBL1

Immunogen

Recombinant protein (or fragment). This information is considered to be commercially sensitive.

Synonyms

Rumi; CLP46; MDSRP; C3orf9; KTELC1; LGMD2Z; MDS010; hCLP46; KDELC1; LGMDR21; POGLUT1

Contact

 www.abclonal.com

Product Information

Source

Rabbit

Isotype

IgG

Purification

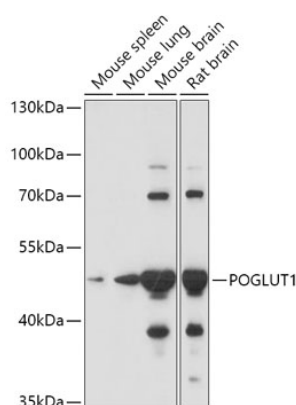
Affinity purification

Storage

Store at -20°C. Avoid freeze / thaw cycles.

Buffer: PBS with 0.01% thimerosal, 50% glycerol, pH7.3.

Validation Data



Western blot analysis of various lysates using POGLUT1 Rabbit pAb (A17737) at 1:1000 dilution.

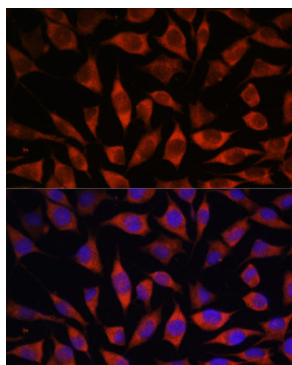
Secondary antibody: HRP-conjugated Goat anti-Rabbit IgG (H+L) (AS014) at 1:10000 dilution.

Lysates/proteins: 25µg per lane.

Blocking buffer: 3% nonfat dry milk in TBST.

Detection: ECL Basic Kit (RM00020).

Exposure time: 15s.



Immunofluorescence analysis of L929

cells using POGLUT1 Rabbit pAb

(A17737) at dilution of 1:100.

Secondary antibody: Cy3-conjugated

Goat anti-Rabbit IgG (H+L) (AS007)

at 1:500 dilution. Blue: DAPI for

nuclear staining.