

A17838

Leader in Biomolecular Solutions for Life Science



PNLDC1 Rabbit pAb

Catalog No.: A17838

Basic Information

Observed MW

60kDa

Calculated MW

60kDa

Category

Polyclonal Antibody

Applications

WB,ELISA

Cross-Reactivity

Human,Mouse,Rat

Background

Enables poly(A)-specific ribonuclease activity. Involved in nuclear-transcribed mRNA poly(A) tail shortening. Located in endoplasmic reticulum. Implicated in spermatogenic failure.

Recommended Dilutions

WB 1:500 - 1:2000

ELISA Recommended starting concentration is 1 µg/mL. Please optimize the concentration based on your specific assay requirements.

Immunogen Information

Gene ID

154197

Swiss Prot

Q8NA58

Immunogen

Recombinant protein (or fragment). This information is considered to be commercially sensitive.

Synonyms

SPGF57; Trimmer; HsPNLDC1; PNLDC1

Contact

 www.abclonal.com

Product Information

Source

Rabbit

Isotype

IgG

Purification

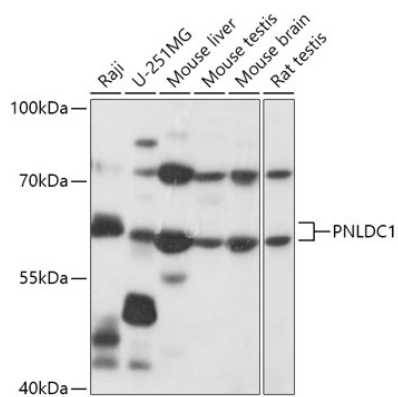
Affinity purification

Storage

Store at -20°C. Avoid freeze / thaw cycles.

Buffer: PBS with 0.01% thimerosal, 50% glycerol, pH7.3.

Validation Data



Western blot analysis of various lysates using PNLDC1 Rabbit pAb (A17838) at 1:1000 dilution.

Secondary antibody: HRP-conjugated Goat anti-Rabbit IgG (H+L) (AS014) at 1:10000 dilution.

Lysates/proteins: 25µg per lane.

Blocking buffer: 3% nonfat dry milk in TBST.

Detection: ECL Basic Kit (RM00020).

Exposure time: 15s.