

A17839

Leader in Biomolecular Solutions for Life Science



CAMSAP1 Rabbit pAb

Catalog No.: A17839

Basic Information

Observed MW

240kDa

Calculated MW

178kDa

Category

Polyclonal Antibody

Applications

WB,IF/ICC,ELISA

Cross-Reactivity

Human,Mouse

Background

Enables microtubule minus-end binding activity and spectrin binding activity. Involved in several processes, including neuron projection development; regulation of cell morphogenesis; and regulation of microtubule polymerization. Located in microtubule. Colocalizes with microtubule minus-end.

Recommended Dilutions

WB 1:500 - 1:2000

IF/ICC 1:50 - 1:200

ELISA Recommended starting concentration is 1 µg/mL. Please optimize the concentration based on your specific assay requirements.

Immunogen Information

Gene ID

157922

Swiss Prot

Q5T5Y3

Immunogen

Recombinant protein (or fragment). This information is considered to be commercially sensitive.

Synonyms

CDCBM12; CAMSAP1

Contact

 www.abclonal.com

Product Information

Source

Rabbit

Isotype

IgG

Purification

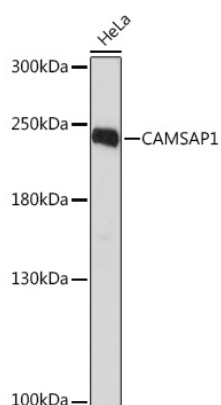
Affinity purification

Storage

Store at -20°C. Avoid freeze / thaw cycles.

Buffer: PBS with 0.01% thimerosal, 50% glycerol, pH7.3.

Validation Data



Western blot analysis of lysates from HeLa cells, using CAMSAP1 Rabbit pAb (A17839) at 1:1000 dilution.

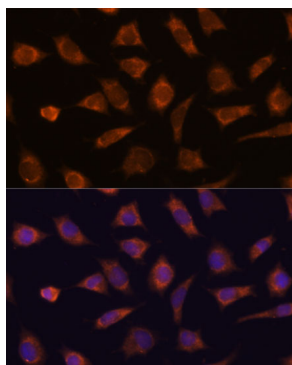
Secondary antibody: HRP-conjugated Goat anti-Rabbit IgG (H+L) (AS014) at 1:10000 dilution.

Lysates/proteins: 25µg per lane.

Blocking buffer: 3% nonfat dry milk in TBST.

Detection: ECL Basic Kit (RM00020).

Exposure time: 90s.



Immunofluorescence analysis of L929 cells using CAMSAP1 Rabbit pAb (A17839) at dilution of 1:100.

Secondary antibody: Cy3-conjugated Goat anti-Rabbit IgG (H+L) (AS007) at 1:500 dilution. Blue: DAPI for nuclear staining.