

A17856

Leader in Biomolecular Solutions for Life Science



CCDC137 Rabbit pAb

Catalog No.: A17856

Basic Information

Observed MW

36kDa

Calculated MW

33kDa

Category

Polyclonal Antibody

Applications

WB,ELISA

Cross-Reactivity

Human

Background

Enables RNA binding activity. Located in chromosome and fibrillar center.

Recommended Dilutions

WB 1:500 - 1:2000

ELISA Recommended starting concentration is 1 µg/mL. Please optimize the concentration based on your specific assay requirements.

Immunogen Information

Gene ID

339230

Swiss Prot

Q6PK04

Immunogen

Recombinant protein (or fragment). This information is considered to be commercially sensitive.

Synonyms

RaRF; CCDC137

Contact

 www.abclonal.com

Product Information

Source

Rabbit

Isotype

IgG

Purification

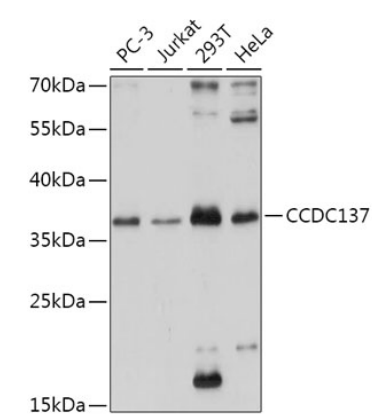
Affinity purification

Storage

Store at -20°C. Avoid freeze / thaw cycles.

Buffer: PBS with 0.01% thimerosal, 50% glycerol, pH7.3.

Validation Data



Western blot analysis of various lysates using CCDC137 Rabbit pAb (A17856) at 1:1000 dilution.
Secondary antibody: HRP-conjugated Goat anti-Rabbit IgG (H+L) (AS014) at 1:10000 dilution.
Lysates/proteins: 25µg per lane.
Blocking buffer: 3% nonfat dry milk in TBST.
Detection: ECL Basic Kit (RM00020).
Exposure time: 20s.