

A17898

Leader in Biomolecular Solutions for Life Science



Alpha-Fetoprotein (AFP) Mouse mAb

Catalog No.: A17898

2 Publications

Basic Information

Observed MW

69kDa

Calculated MW

69kDa

Category

Monoclonal Antibody

Applications

WB,IHC-P,IF/ICC,ELISA

Cross-Reactivity

Human,Mouse

CloneNo number

AMC0201

Background

This gene encodes alpha-fetoprotein, a major plasma protein produced by the yolk sac and the liver during fetal life. Alpha-fetoprotein expression in adults is often associated with hepatocarcinoma and with teratoma, and has prognostic value for managing advanced gastric cancer. However, hereditary persistence of alpha-fetoprotein may also be found in individuals with no obvious pathology. The protein is thought to be the fetal counterpart of serum albumin, and the alpha-fetoprotein and albumin genes are present in tandem in the same transcriptional orientation on chromosome 4. Alpha-fetoprotein is found in monomeric as well as dimeric and trimeric forms, and binds copper, nickel, fatty acids and bilirubin. The level of alpha-fetoprotein in amniotic fluid is used to measure renal loss of protein to screen for spina bifida and anencephaly.

Recommended Dilutions

WB 1:1000 - 1:4000

IHC-P 1:200 - 1:800

IF/ICC 1:100 - 1:400

ELISA Recommended starting concentration is 1 µg/mL. Please optimize the concentration based on your specific assay requirements.

Immunogen Information

Gene ID

174

Swiss Prot

P02771

Immunogen

Recombinant fusion protein containing a sequence corresponding to amino acids 19-609 of human Alpha-Fetoprotein (AFP).

Synonyms

AFPD; FETA; HPAFP; Alpha-Fetoprotein (AFP)

Product Information

Source

Mouse

Isotype

IgG1,Kappa

Purification

Affinity purification

Storage

Store at -20°C. Avoid freeze / thaw cycles.

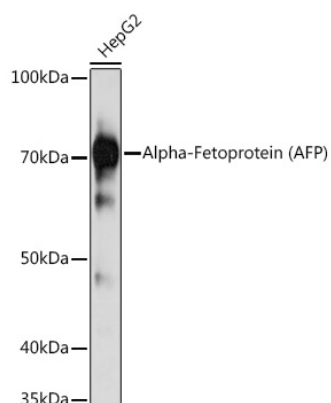
Buffer: PBS with 0.01% thimerosal, 50% glycerol, pH7.3.

Contact

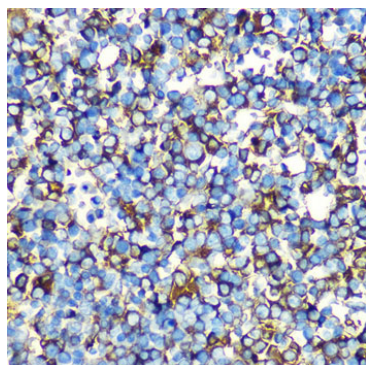


www.abclonal.com

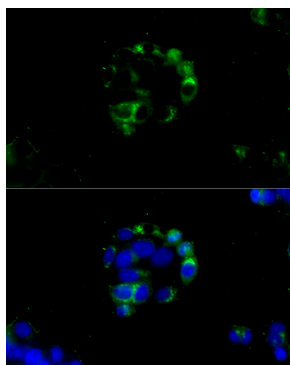
Validation Data



Western blot analysis of lysates from HepG2 cells, using Alpha-Fetoprotein (Alpha-Fetoprotein (AFP)) Mouse mAb (A17898) at 1:1000 dilution.
Secondary antibody: HRP-conjugated Goat anti-Mouse IgG (H+L) (AS003) at 1:10000 dilution.
Lysates/proteins: 25µg per lane.
Blocking buffer: 3% nonfat dry milk in TBST.
Detection: ECL Basic Kit (RM00020).
Exposure time: 30s.



Immunohistochemistry analysis of paraffin-embedded Mouse fetal liver using Alpha-Fetoprotein (Alpha-Fetoprotein (AFP)) Mouse mAb (A17898) at dilution of 1:100 (40x lens). Microwave antigen retrieval performed with 0.01M PBS Buffer (pH 7.2) prior to IHC staining.



Immunofluorescence analysis of HepG2 cells using Alpha-Fetoprotein (AFP) Mouse mAb (A17898) at dilution of 1:100 (40x lens). Blue: DAPI for nuclear staining.