

A17965

Leader in Biomolecular Solutions for Life Science



MTCO2 Rabbit pAb

Catalog No.: A17965 **2 Publications**

Basic Information

Observed MW

21kDa

Calculated MW

26kDa

Category

Polyclonal Antibody

Applications

WB,IHC-P,IF/ICC,ELISA

Cross-Reactivity

Human,Mouse,Rat

Background

Contributes to cytochrome-c oxidase activity. Predicted to be involved in mitochondrial electron transport, cytochrome c to oxygen and positive regulation of vasoconstriction. Located in mitochondrial inner membrane. Part of respiratory chain complex IV. Biomarker of Huntington's disease and stomach cancer.

Recommended Dilutions

WB 1:1000 - 1:5000

IHC-P 1:50 - 1:200

IF/ICC 1:50 - 1:200

ELISA Recommended starting concentration is 1 µg/mL. Please optimize the concentration based on your specific assay requirements.

Immunogen Information

Gene ID

4513

Swiss Prot

P00403

Immunogen

Synthetic peptide. This information is considered to be commercially sensitive.

Synonyms

COII; MTCO2; COX2

Product Information

Source

Rabbit

Isotype

IgG

Purification

Affinity purification

Storage

Store at -20°C. Avoid freeze / thaw cycles.

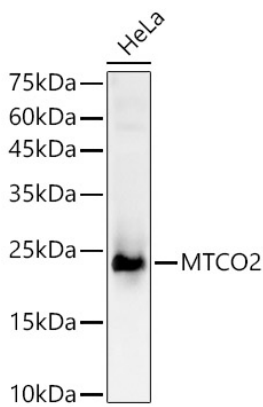
Buffer: PBS containing 50% glycerol, preserved with proclin300 or sodium azide (as specified on the Certificate of Analysis), pH 7.3.

Contact



www.abclonal.com

Validation Data



Western blot analysis of lysates from HeLa cells, using MTCO2 Rabbit pAb (A17965) at 1:2000 dilution.

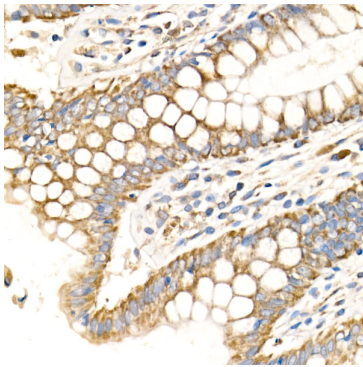
Secondary antibody: HRP-conjugated Goat anti-Rabbit IgG (H+L) (AS014) at 1:10000 dilution.

Lysates/proteins: 25µg per lane.

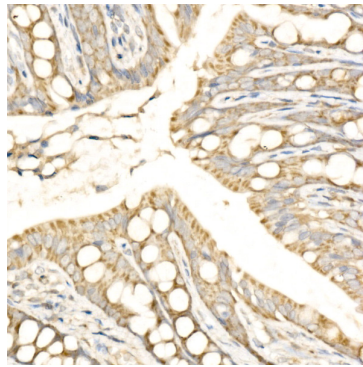
Blocking buffer: 3% nonfat dry milk in TBST.

Detection: ECL Basic Kit (RM00020).

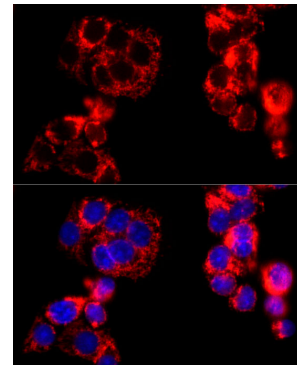
Exposure time: 10s.



Immunohistochemistry analysis of paraffin-embedded Human colon using MTCO2 Rabbit pAb (A17965) at dilution of 1:100 (40x lens). High pressure antigen retrieval performed with 0.01M Citrate buffer (pH 6.0) prior to IHC staining.



Immunohistochemistry analysis of paraffin-embedded Rat colon using MTCO2 Rabbit pAb (A17965) at dilution of 1:100 (40x lens). High pressure antigen retrieval performed with 0.01M Citrate buffer (pH 6.0) prior to IHC staining.



Immunofluorescence analysis of HepG2 cells using MTCO2 Rabbit pAb (A17965) at dilution of 1:100 (40x lens). Secondary antibody: Cy3-conjugated Goat anti-Rabbit IgG (H+L) (AS007) at 1:500 dilution. Blue: DAPI for nuclear staining.