

A17979

Leader in Biomolecular Solutions for Life Science



## ZDHHC2 Rabbit pAb

Catalog No.: A17979

### Basic Information

**Observed MW**

50kDa

**Calculated MW**

42kDa

**Category**

Polyclonal Antibody

**Applications**

WB,ELISA

**Cross-Reactivity**

Human,Rat

### Background

Enables protein homodimerization activity and protein-cysteine S-palmitoyltransferase activity. Involved in several processes, including peptidyl-L-cysteine S-palmitoylation; regulation of protein catabolic process; and regulation of protein localization to plasma membrane. Located in Golgi apparatus and endoplasmic reticulum membrane.

### Recommended Dilutions

**WB** 1:500 - 1:2000

**ELISA** Recommended starting concentration is 1 µg/mL. Please optimize the concentration based on your specific assay requirements.

### Immunogen Information

**Gene ID**

51201

**Swiss Prot**

Q9UIJ5

**Immunogen**

Synthetic peptide. This information is considered to be commercially sensitive.

**Synonyms**

DHHC2; ZNF372; ZDHHC2

### Contact

 [www.abclonal.com](http://www.abclonal.com)

### Product Information

**Source**

Rabbit

**Isotype**

IgG

**Purification**

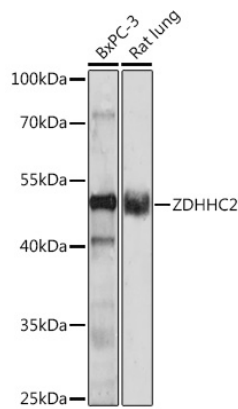
Affinity purification

**Storage**

Store at -20°C. Avoid freeze / thaw cycles.

Buffer: PBS with 0.01% thimerosal, 50% glycerol, pH7.3.

# Validation Data



Western blot analysis of various lysates using ZDHHC2 Rabbit pAb (A17979) at 1:1000 dilution.  
Secondary antibody: HRP-conjugated Goat anti-Rabbit IgG (H+L) (AS014) at 1:10000 dilution.  
Lysates/proteins: 25µg per lane.  
Blocking buffer: 3% nonfat dry milk in TBST.  
Detection: ECL Enhanced Kit (RM00021).  
Exposure time: 90s.