

A18065

Leader in Biomolecular Solutions for Life Science



[KO Validated] NLRX1 Rabbit pAb

Catalog No.: A18065

KO Validated

Basic Information

Observed MW

108kDa

Calculated MW

108kDa

Category

Polyclonal Antibody

Applications

WB, ELISA

Cross-Reactivity

Human, Mouse, Rat

Background

The protein encoded by this gene is a member of the NLR family and localizes to the outer mitochondrial membrane. The encoded protein is a regulator of mitochondrial antiviral responses. Three transcript variants encoding the same protein have been found for this gene.

Recommended Dilutions

WB 1:500 - 1:2000

ELISA Recommended starting concentration is 1 µg/mL. Please optimize the concentration based on your specific assay requirements.

Immunogen Information

Gene ID

79671

Swiss Prot

Q86UT6

Immunogen

Recombinant protein (or fragment). This information is considered to be commercially sensitive.

Synonyms

NOD5; NOD9; NOD26; DLNB26; CLR11.3; X1

Contact

 www.abclonal.com

Product Information

Source

Rabbit

Isotype

IgG

Purification

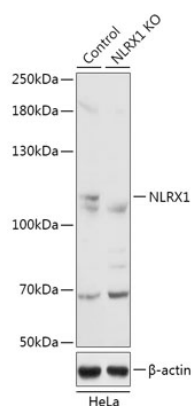
Affinity purification

Storage

Store at -20°C. Avoid freeze / thaw cycles.

Buffer: PBS with 0.01% thimerosal, 50% glycerol, pH 7.3.

Validation Data



Western blot analysis of lysates from wild type (WT) and NLRX1 knockout (KO) HeLa cells, using [KO Validated] NLRX1 Rabbit pAb (A18065) at 1:3000 dilution. Secondary antibody: HRP-conjugated Goat anti-Rabbit IgG (H+L) (AS014) at 1:10000 dilution.
Lysates/proteins: 25µg per lane.
Blocking buffer: 3% nonfat dry milk in TBST.
Detection: ECL Basic Kit (RM00020).
Exposure time: 10s.