

A18113

Leader in Biomolecular Solutions for Life Science



ZDHHC6 Rabbit pAb

Catalog No.: A18113

Basic Information

Observed MW

56kDa

Calculated MW

48kDa

Category

Polyclonal Antibody

Applications

WB,ELISA

Cross-Reactivity

Human,Mouse,Rat

Background

Enables palmitoyltransferase activity. Involved in positive regulation of mitochondrial fusion and protein palmitoylation. Located in endoplasmic reticulum.

Recommended Dilutions

WB 1:500 - 1:2000

ELISA Recommended starting concentration is 1 µg/mL. Please optimize the concentration based on your specific assay requirements.

Immunogen Information

Gene ID

64429

Swiss Prot

Q9H6R6

Immunogen

Recombinant protein (or fragment). This information is considered to be commercially sensitive.

Synonyms

DHHC6; DHHC-6; ZNF376; ZDHHC6

Contact

 www.abclonal.com

Product Information

Source

Rabbit

Isotype

IgG

Purification

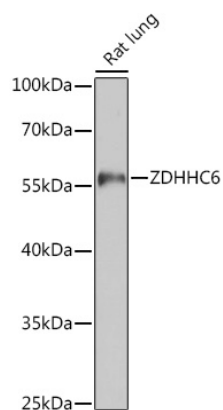
Affinity purification

Storage

Store at -20°C. Avoid freeze / thaw cycles.

Buffer: PBS with 0.01% thimerosal, 50% glycerol, pH7.3.

Validation Data



Western blot analysis of lysates from Rat lung, using ZDHHC6 Rabbit pAb (A18113) at 1:1000 dilution.

Secondary antibody: HRP-conjugated Goat anti-Rabbit IgG (H+L) (AS014) at 1:10000 dilution.

Lysates/proteins: 25µg per lane.

Blocking buffer: 3% nonfat dry milk in TBST.

Detection: ECL Basic Kit (RM00020).

Exposure time: 90s.