

A18197

Leader in Biomolecular Solutions for Life Science



K11-linkage Specific Polyubiquitin Rabbit pAb

Catalog No.: A18197

1 Publications

Basic Information

Observed MW

Calculated MW

Category

Polyclonal Antibody

Applications

WB, ELISA, DB

Cross-Reactivity

Human, Mouse, Rat, Other (Wide Range Predicted)

Background

Polyubiquitination is a posttranslational modification where ubiquitin chains containing isopeptide bonds linking one of seven ubiquitin lysines with the C terminus of an adjoining ubiquitin are covalently attached to proteins. A crystal structure of K11-linked diubiquitin demonstrates a distinct conformation from K48- or K63-linked diubiquitin. It is important that K11-linked ubiquitin chains as critical regulators of mitotic protein degradation.

Recommended Dilutions

WB 1:500 - 1:2000

DB 1:500 - 1:1000

ELISA Recommended starting concentration is 1 µg/mL. Please optimize the concentration based on your specific assay requirements.

Immunogen Information

Gene ID

Swiss Prot

Immunogen

A synthetic peptide corresponding to a sequence containing polyubiquitinated protein (K11 linkage).

Synonyms

Contact

 www.abclonal.com

Product Information

Source
Rabbit

Isotype
IgG

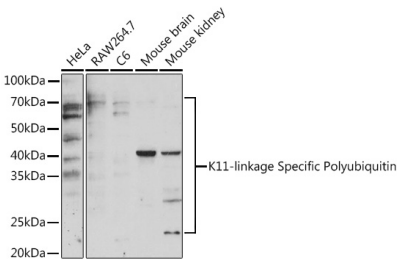
Purification
Affinity purification

Storage

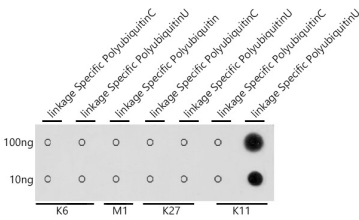
Store at -20°C. Avoid freeze / thaw cycles.

Buffer: PBS with 0.09% Sodium azide, 50% glycerol, pH 7.3.

Validation Data



Western blot analysis of various lysates using K11-linkage Specific Polyubiquitin Rabbit pAb (A18197) at 1:500 dilution.
Secondary antibody: HRP-conjugated Goat anti-Rabbit IgG (H+L) (AS014) at 1:10000 dilution.
Lysates/proteins: 25µg per lane.
Blocking buffer: 3% nonfat dry milk in TBST.
Detection: ECL Enhanced Kit (RM00021).
Exposure time: 90s.



Dot-blot analysis of all sorts of peptides using K11-linkage Specific Polyubiquitin antibody (A18197) at 1:1000 dilution.