

A1820

Leader in Biomolecular Solutions for Life Science



# KEAP1 Rabbit pAb

Catalog No.: A1820

43 Publications

## Basic Information

### Observed MW

60-64kDa

### Calculated MW

70kDa

### Category

Polyclonal Antibody

### Applications

WB,IHC-P,IF/ICC,ELISA

### Cross-Reactivity

Human,Mouse,Rat

## Background

This gene encodes a protein containing KELCH-1 like domains, as well as a BTB/POZ domain. Kelch-like ECH-associated protein 1 interacts with NF-E2-related factor 2 in a redox-sensitive manner and the dissociation of the proteins in the cytoplasm is followed by transportation of NF-E2-related factor 2 to the nucleus. This interaction results in the expression of the catalytic subunit of gamma-glutamylcysteine synthetase. Two alternatively spliced transcript variants encoding the same isoform have been found for this gene.

## Recommended Dilutions

**WB** 1:100 - 1:500

**IHC-P** 1:50 - 1:200

**IF/ICC** 1:50 - 1:200

**ELISA** Recommended starting concentration is 1 µg/mL. Please optimize the concentration based on your specific assay requirements.

## Immunogen Information

### Gene ID

9817

### Swiss Prot

Q14145

### Immunogen

Recombinant protein (or fragment). This information is considered to be commercially sensitive.

### Synonyms

INrf2; KLHL19; KEAP1

## Product Information

### Source

Rabbit

### Isotype

IgG

### Purification

Affinity purification

### Storage

Store at -20°C. Avoid freeze / thaw cycles.

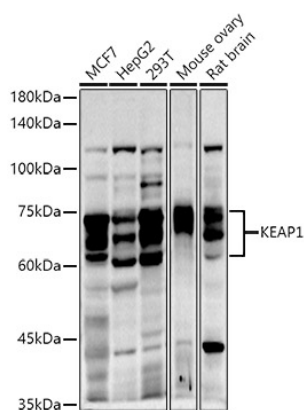
Buffer: PBS with 0.09% Sodium azide, 50% glycerol, pH7.3.

## Contact

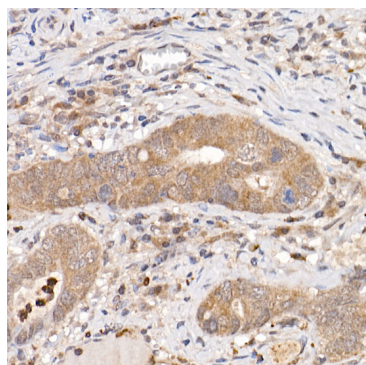


[www.abclonal.com](http://www.abclonal.com)

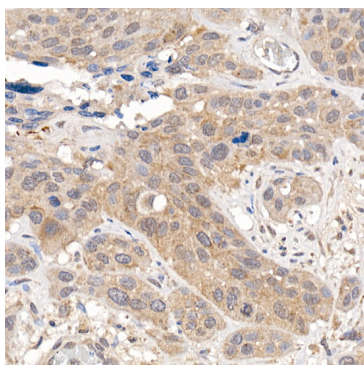
## Validation Data



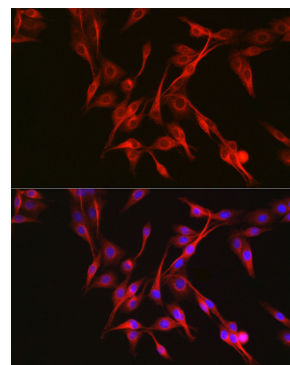
Western blot analysis of various lysates using KEAP1 Rabbit pAb (A1820) at 1:500 dilution.  
 Secondary antibody: HRP-conjugated Goat anti-Rabbit IgG (H+L) (AS014) at 1:10000 dilution.  
 Lysates/proteins: 25µg per lane.  
 Blocking buffer: 3% nonfat dry milk in TBST.  
 Detection: ECL Enhanced Kit (RM00021).  
 Exposure time: 60s.



Immunohistochemistry analysis of paraffin-embedded Human colon carcinoma using KEAP1 Rabbit pAb (A1820) at dilution of 1:50 (40x lens). High pressure antigen retrieval performed with 0.01M Citrate buffer (pH 6.0) prior to IHC staining.



Immunohistochemistry analysis of paraffin-embedded Human esophageal cancer using KEAP1 Rabbit pAb (A1820) at dilution of 1:50 (40x lens). High pressure antigen retrieval performed with 0.01M Citrate buffer (pH 6.0) prior to IHC staining.



Immunofluorescence analysis of PC-12 cells using KEAP1 Rabbit pAb (A1820) at dilution of 1:50 (40x lens). Secondary antibody: Cy3-conjugated Goat anti-Rabbit IgG (H+L) (AS007) at 1:500 dilution. Blue: DAPI for nuclear staining.