

A18211

Leader in Biomolecular Solutions for Life Science



ERCC6 Rabbit pAb

Catalog No.: A18211

Basic Information

Observed MW

168kDa

Calculated MW

168kDa

Category

Polyclonal Antibody

Applications

WB,IHC-P,ELISA

Cross-Reactivity

Human,Mouse,Rat

Background

This gene encodes a DNA-binding protein that is important in transcription-coupled excision repair. The encoded protein has ATP-stimulated ATPase activity, interacts with several transcription and excision repair proteins, and may promote complex formation at DNA repair sites. Mutations in this gene are associated with Cockayne syndrome type B and cerebrooculofacioskeletal syndrome 1. Alternative splicing occurs between a splice site from exon 5 of this gene to the 3' splice site upstream of the open reading frame (ORF) of the adjacent gene, piggyback-derived-3 (GeneID:267004), which activates the alternative polyadenylation site downstream of the piggyback-derived-3 ORF. The resulting transcripts encode a fusion protein that shares sequence with the product of each individual gene.

Recommended Dilutions

WB 1:500 - 1:1000

IHC-P 1:50 - 1:200

ELISA Recommended starting concentration is 1 µg/mL. Please optimize the concentration based on your specific assay requirements.

Immunogen Information

Gene ID

2074

Swiss Prot

Q03468

Immunogen

Synthetic peptide. This information is considered to be commercially sensitive.

Synonyms

CSB; CKN2; COFS; ARMD5; COFS1; POF11; RAD26; UVSS1; CSB-PGBD3; ERCC6

Contact

 www.abclonal.com

Product Information

Source

Rabbit

Isotype

IgG

Purification

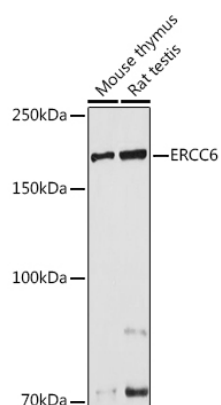
Affinity purification

Storage

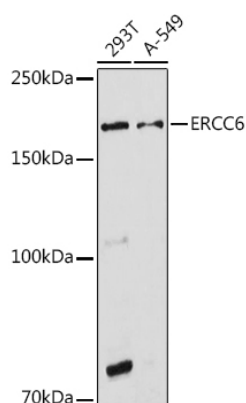
Store at -20°C. Avoid freeze / thaw cycles.

Buffer: PBS with 0.05% proclin300,50% glycerol,pH7.3.

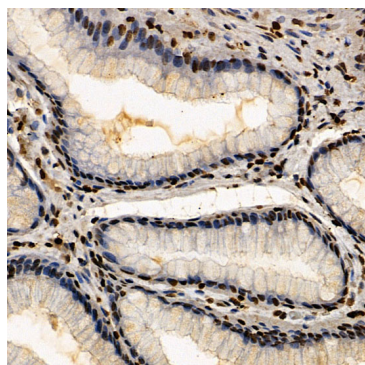
Validation Data



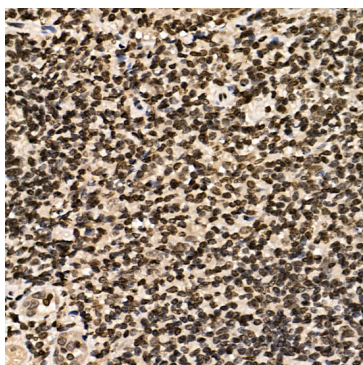
Western blot analysis of various lysates using ERCC6 Rabbit pAb (A18211) at 1:1000 dilution.
 Secondary antibody: HRP-conjugated Goat anti-Rabbit IgG (H+L) (AS014) at 1:10000 dilution.
 Lysates/proteins: 25µg per lane.
 Blocking buffer: 3% nonfat dry milk in TBST.
 Detection: ECL Basic Kit (RM00020).
 Exposure time: 30s.



Western blot analysis of various lysates using ERCC6 Rabbit pAb (A18211) at 1:1000 dilution.
 Secondary antibody: HRP-conjugated Goat anti-Rabbit IgG (H+L) (AS014) at 1:10000 dilution.
 Lysates/proteins: 25µg per lane.
 Blocking buffer: 3% nonfat dry milk in TBST.
 Detection: ECL Basic Kit (RM00020).
 Exposure time: 180s.



Immunohistochemistry analysis of paraffin-embedded Human colon carcinoma using ERCC6 Rabbit pAb (A18211) at dilution of 1:100 (40x lens). Microwave antigen retrieval performed with 0.01M PBS Buffer (pH 7.2) prior to IHC staining.



Immunohistochemistry analysis of paraffin-embedded Human tonsil using ERCC6 Rabbit pAb (A18211) at dilution of 1:100 (40x lens). Microwave antigen retrieval performed with 0.01M PBS Buffer (pH 7.2) prior to IHC staining.