

A18412

Leader in Biomolecular Solutions for Life Science



NCAPD2 Rabbit pAb

Catalog No.: A18412

Basic Information

Observed MW

175kDa

Calculated MW

157kDa

Category

Polyclonal Antibody

Applications

WB,IF/ICC,ELISA

Cross-Reactivity

Human,Mouse,Rat

Background

Enables histone binding activity. Involved in mitotic chromosome condensation. Located in condensed chromosome; cytosol; and nucleoplasm. Part of condensin complex. Colocalizes with cytoplasm and nuclear chromosome. Implicated in primary autosomal recessive microcephaly.

Recommended Dilutions

WB 1:500 - 1:2000

IF/ICC 1:50 - 1:200

ELISA Recommended starting concentration is 1 µg/mL. Please optimize the concentration based on your specific assay requirements.

Immunogen Information

Gene ID

9918

Swiss Prot

Q15021

Immunogen

Synthetic peptide. This information is considered to be commercially sensitive.

Synonyms

CNAP1; CAP-D2; MCPH21; hCAP-D2; NCAPD2

Contact



www.abclonal.com

Product Information

Source

Rabbit

Isotype

IgG

Purification

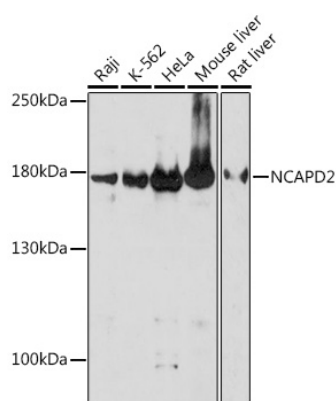
Affinity purification

Storage

Store at -20°C. Avoid freeze / thaw cycles.

Buffer: PBS with 0.01% thimerosal, 50% glycerol, pH7.3.

Validation Data



Western blot analysis of various lysates using NCAPD2 Rabbit pAb (A18412) at 1:1000 dilution.

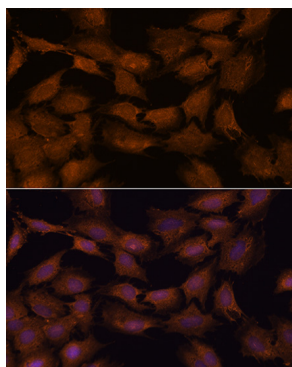
Secondary antibody: HRP-conjugated Goat anti-Rabbit IgG (H+L) (AS014) at 1:10000 dilution.

Lysates/proteins: 25µg per lane.

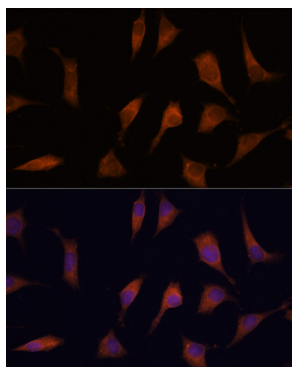
Blocking buffer: 3% nonfat dry milk in TBST.

Detection: ECL Basic Kit (RM00020).

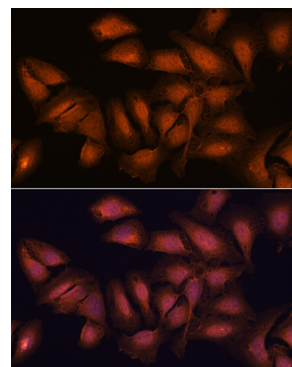
Exposure time: 180s.



Immunofluorescence analysis of C6 cells using NCAPD2 Rabbit pAb (A18412) at dilution of 1:100. Blue: DAPI for nuclear staining.



Immunofluorescence analysis of L929 cells using NCAPD2 Rabbit pAb (A18412) at dilution of 1:100. Blue: DAPI for nuclear staining.



Immunofluorescence analysis of U2OS cells using NCAPD2 Rabbit pAb (A18412) at dilution of 1:100. Blue: DAPI for nuclear staining.