

A18419

Leader in Biomolecular Solutions for Life Science



C1QL1 Rabbit pAb

Catalog No.: A18419

Basic Information

Observed MW

26kDa

Calculated MW

26kDa

Category

Polyclonal Antibody

Applications

WB,ELISA

Cross-Reactivity

Human,Mouse,Rat

Background

Predicted to enable signaling receptor binding activity. Predicted to act upstream of or within maintenance of synapse structure; motor learning; and neuron remodeling. Predicted to be located in several cellular components, including climbing fiber; presynapse; and synaptic cleft. Predicted to be part of collagen trimer.

Recommended Dilutions

WB 1:500 - 1:2000

ELISA Recommended starting concentration is 1 µg/mL. Please optimize the concentration based on your specific assay requirements.

Immunogen Information

Gene ID

10882

Swiss Prot

O75973

Immunogen

Synthetic peptide. This information is considered to be commercially sensitive.

Synonyms

CRF; C1QRF; CTRP14; C1QTNF14; C1QL1

Contact

 www.abclonal.com

Product Information

Source

Rabbit

Isotype

IgG

Purification

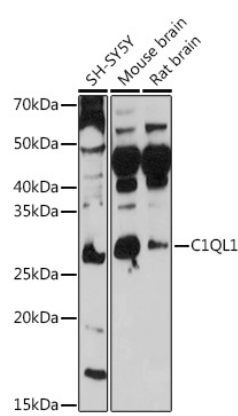
Affinity purification

Storage

Store at -20°C. Avoid freeze / thaw cycles.

Buffer: PBS with 0.01% thimerosal, 50% glycerol, pH7.3.

Validation Data



Western blot analysis of various lysates using C1QL1 Rabbit pAb (A18419) at 1:1000 dilution.
Secondary antibody: HRP-conjugated Goat anti-Rabbit IgG (H+L) (AS014) at 1:10000 dilution.
Lysates/proteins: 25µg per lane.
Blocking buffer: 3% nonfat dry milk in TBST.
Detection: ECL Basic Kit (RM00020).
Exposure time: 10s.