

A1854

Leader in Biomolecular Solutions for Life Science



RNASE3 Rabbit pAb

Catalog No.: A1854

Basic Information

Observed MW

Calculated MW

18kDa

Category

Polyclonal Antibody

Applications

IHC-P,ELISA

Cross-Reactivity

Human

Background

The protein encoded by this gene belongs to the pancreatic ribonuclease family, a subset of the ribonuclease A superfamily. The protein exhibits antimicrobial activity against pathogenic bacteria

Recommended Dilutions

IHC-P 1:50 - 1:100

ELISA Recommended starting concentration is 1 µg/mL. Please optimize the concentration based on your specific assay requirements.

Immunogen Information

Gene ID

6037

Swiss Prot

P12724

Immunogen

Recombinant protein (or fragment). This information is considered to be commercially sensitive.

Synonyms

ECP; RAF1; RNS3; RNASE3

Contact



www.abclonal.com

Product Information

Source

Rabbit

Isotype

IgG

Purification

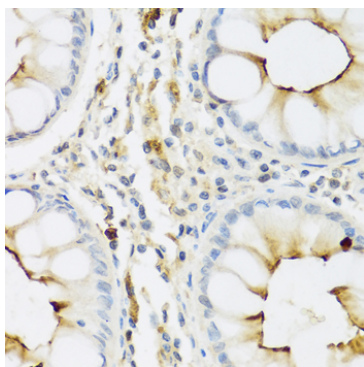
Affinity purification

Storage

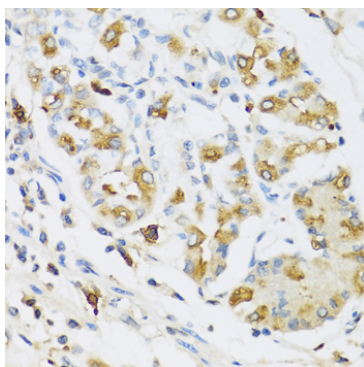
Store at -20°C. Avoid freeze / thaw cycles.

Buffer: PBS with 0.02% sodium azide, 50% glycerol, pH7.3.

Validation Data



Immunohistochemistry analysis of paraffin-embedded Human colon using RNASE3 Rabbit pAb (A1854) at dilution of 1:100 (40x lens). Microwave antigen retrieval performed with 0.01M PBS Buffer (pH 7.2) prior to IHC staining.



Immunohistochemistry analysis of paraffin-embedded Human stomach using RNASE3 Rabbit pAb (A1854) at dilution of 1:100 (40x lens). Microwave antigen retrieval performed with 0.01M PBS Buffer (pH 7.2) prior to IHC staining.