

A18682

Leader in Biomolecular Solutions for Life Science



Pan Cadherin Rabbit pAb

Catalog No.: A18682

2 Publications

Basic Information

Observed MW

135kDa

Calculated MW

Category

Polyclonal Antibody

Applications

WB,IP,ELISA

Cross-Reactivity

Human,Mouse,Rat

Background

Cadherin is one of a class of integral-membrane glycoproteins that are involved in cell to cell attachment for preserving the integrity of all solid tissues. Cadherins have three major regions: the Ca^{2+} -dependent extracellular region that mediates adhesion (cadherin to cadherin) for cell to cell binding; the transmembrane region; and the cytoplasmic region that extends into the cell and interacts with catenins, which in turn are linked to the actin of the cytoskeleton. Cadherins are differentially expressed during development and in adult organs. Since many cell types express multiple cadherin subclasses simultaneously (the combination differs with cell type), it can be inferred that the adhesion properties of individual cells are thus governed by varying the combinations of cadherins. Altered expression of cadherins are involved in invasion and metastasis of tumour cells. The classical cadherins (e.g. E-, N-, and P-cadherins) are the most common family members. E-cadherin (also known as uvomorulin) is concentrated in the belt desmosome in epithelial cells; N-cadherin is found in nerve, muscle, and lens cells and helps maintain the integrity of neuronal aggregates; P-cadherin is expressed in placental and epidermal cells.

Recommended Dilutions

WB 1:500 - 1:2000

IP 0.5 μg -4 μg antibody for
200 μg -400 μg extracts
of whole cells

ELISA Recommended starting
concentration is 1
 $\mu\text{g}/\text{mL}$. Please optimize
the concentration
based on your specific
assay requirements.

Contact



www.abclonal.com

Immunogen Information

Gene ID

999/1000/1001/1002

Swiss Prot

P12830/P19022/P22223/P55283

Immunogen

Synthetic peptide. This information is considered to be commercially sensitive.

Synonyms

Product Information

Source

Rabbit

Isotype

IgG

Purification

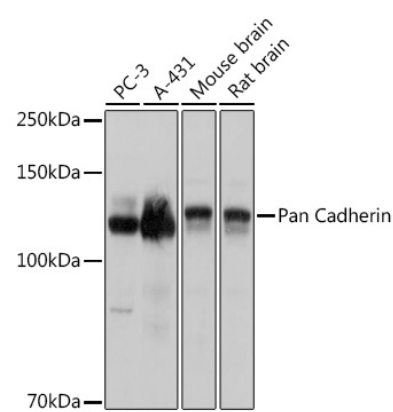
Affinity purification

Storage

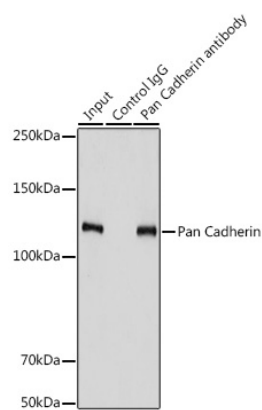
Store at -20°C . Avoid freeze / thaw cycles.

Buffer: PBS with 0.01% thimerosal, 50% glycerol, pH7.3.

Validation Data



Western blot analysis of various lysates using Pan Cadherin Rabbit pAb (A18682) at 1:3000 dilution.
Secondary antibody: HRP-conjugated Goat anti-Rabbit IgG (H+L) (AS014) at 1:10000 dilution.
Lysates/proteins: 25µg per lane.
Blocking buffer: 3% nonfat dry milk in TBST.
Detection: ECL Basic Kit (RM00020).
Exposure time: 1s.



Immunoprecipitation analysis of 900 µg extracts of PC-3 cells using 3 µg Pan Cadherin antibody (A18682). Western blot was performed from the immunoprecipitate using Pan Cadherin antibody (A18682) at a dilution of 1:3000.