

A18850

Leader in Biomolecular Solutions for Life Science

# Rad21 Rabbit pAb

Catalog No.: A18850

1 Publications

## Basic Information

### Observed MW

130kDa

### Calculated MW

72kDa

### Category

Polyclonal Antibody

### Applications

WB,IHC-P,IF/ICC,IP,ChIP,ELISA

### Cross-Reactivity

Human,Mouse,Rat

## Background

The protein encoded by this gene is highly similar to the gene product of *Schizosaccharomyces pombe rad21*, a gene involved in the repair of DNA double-strand breaks, as well as in chromatid cohesion during mitosis. This protein is a nuclear phospho-protein, which becomes hyperphosphorylated in cell cycle M phase. The highly regulated association of this protein with mitotic chromatin specifically at the centromere region suggests its role in sister chromatid cohesion in mitotic cells.

## Recommended Dilutions

**WB** 1:500 - 1:1000

**IHC-P** 1:50 - 1:200

**IF/ICC** 1:50 - 1:200

**IP** 0.5µg-4µg antibody for  
200µg-400µg extracts  
of whole cells

**ELISA** Recommended starting  
concentration is 1  
µg/mL. Please optimize  
the concentration  
based on your specific  
assay requirements.

**ChIP** 5µg antibody for  
10µg-15µg of  
Chromatin

## Immunogen Information

### Gene ID

5885

### Swiss Prot

O60216

### Immunogen

Recombinant protein (or fragment). This information is considered to be commercially sensitive.

### Synonyms

MGS; HR21; MCD1; NXP1; SCC1; CDLS4; hHR21; HRAD21; Rad21

## Product Information

### Source

Rabbit

### Isotype

IgG

### Purification

Affinity purification

### Storage

Store at -20°C. Avoid freeze / thaw cycles.

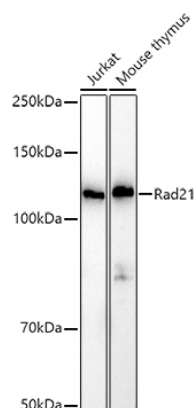
Buffer: PBS with 0.05% proclin300, 50% glycerol, pH7.3.

## Contact

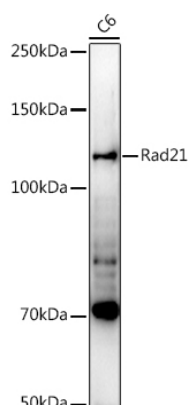


[www.abclonal.com](http://www.abclonal.com)

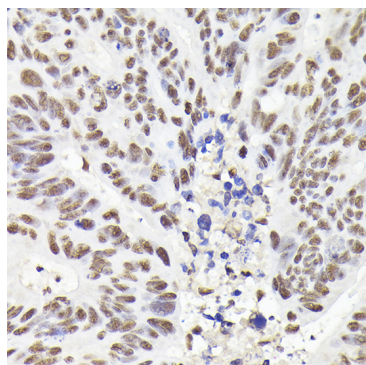
## Validation Data



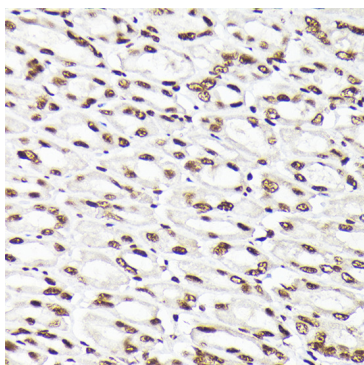
Western blot analysis of various lysates using Rad21 Rabbit pAb (A18850) at 1:1000 dilution.  
 Secondary antibody: HRP-conjugated Goat anti-Rabbit IgG (H+L) (AS014) at 1:10000 dilution.  
 Lysates/proteins: 25µg per lane.  
 Blocking buffer: 3% nonfat dry milk in TBST.  
 Detection: ECL Basic Kit (RM00020).  
 Exposure time: 10s.



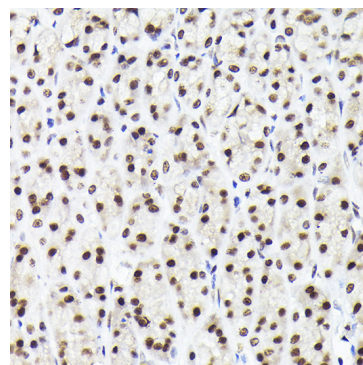
Western blot analysis of lysates from C6 cells, using Rad21 Rabbit pAb (A18850) at 1:1000 dilution.  
 Secondary antibody: HRP-conjugated Goat anti-Rabbit IgG (H+L) (AS014) at 1:10000 dilution.  
 Lysates/proteins: 25µg per lane.  
 Blocking buffer: 3% nonfat dry milk in TBST.  
 Detection: ECL Enhanced Kit (RM00021).  
 Exposure time: 90s.



Immunohistochemistry analysis of paraffin-embedded Human colon carcinoma using Rad21 Rabbit pAb (A18850) at dilution of 1:200 (40x lens). High pressure antigen retrieval performed with 0.01M Citrate buffer (pH 6.0) prior to IHC staining.

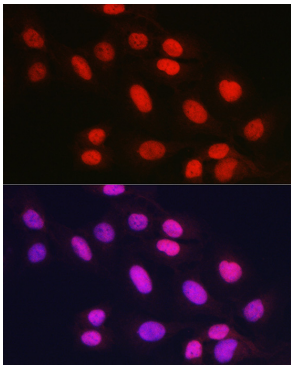


Immunohistochemistry analysis of paraffin-embedded Mouse stomach using Rad21 Rabbit pAb (A18850) at dilution of 1:200 (40x lens). High pressure antigen retrieval performed with 0.01M Citrate buffer (pH 6.0) prior to IHC staining.

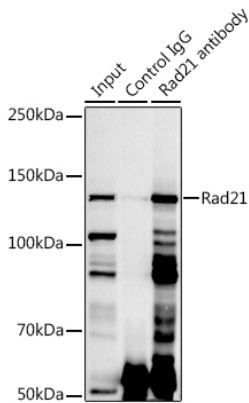


Immunohistochemistry analysis of paraffin-embedded Rat stomach using Rad21 Rabbit pAb (A18850) at dilution of 1:200 (40x lens). High pressure antigen retrieval performed with 0.01M Citrate buffer (pH 6.0) prior to IHC staining.

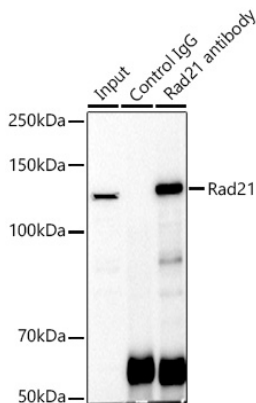
Validation Data



Immunofluorescence analysis of U2OS cells using Rad21 Rabbit pAb (A18850) at dilution of 1:100 (40x lens). Secondary antibody: Cy3-conjugated Goat anti-Rabbit IgG (H+L) (AS007) at 1:500 dilution. Blue: DAPI for nuclear staining.

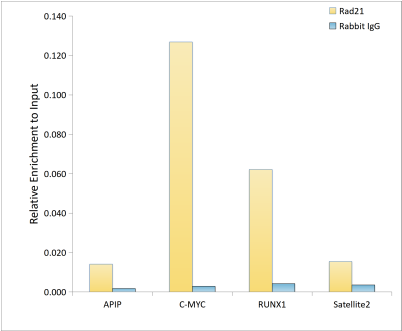


Immunoprecipitation analysis of 300 µg extracts of Jurkat cells using 3 µg Rad21 antibody (A18850). Western blot was performed from the immunoprecipitate using Rad21 antibody (A18850) at a dilution of 1:1000.

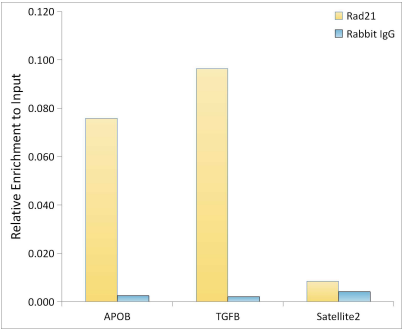


Immunoprecipitation analysis of 300 µg extracts of Jurkat cells using 3 µg Rad21 antibody (A18850). Western blot was performed from the immunoprecipitate using Rad21 antibody (A18850) at a dilution of 1:1000.

Validation Data



Chromatin immunoprecipitation analysis of extracts of A-549 cells, using Rad21 antibody (A18850) and rabbit IgG. The amount of immunoprecipitated DNA was checked by quantitative PCR. Histogram was constructed by the ratios of the immunoprecipitated DNA to the input.



Chromatin immunoprecipitation analysis of extracts of A-549 cells, using Rad21 antibody (A18850) and rabbit IgG. The amount of immunoprecipitated DNA was checked by quantitative PCR. Histogram was constructed by the ratios of the immunoprecipitated DNA to the input.