

A19002

Leader in Biomolecular Solutions for Life Science



BTK Rabbit mAb

Catalog No.: A19002

Recombinant

4 Publications

Basic Information

Observed MW

76kDa

Calculated MW

76kDa

Category

SMab Recombinant Monoclonal
Antibody

Applications

WB,IHC-P,IF/ICC,ELISA

Cross-Reactivity

Human,Mouse

CloneNo number

ARC0485

Recommended Dilutions

WB	1:1000 - 1:2000
IHC-P	1:500 - 1:200
IF/ICC	1:100 - 1:400
ELISA	Recommended starting concentration is 1 µg/mL. Please optimize the concentration based on your specific assay requirements.

Contact



www.abclonal.com

Background

The protein encoded by this gene plays a crucial role in B-cell development. Mutations in this gene cause X-linked agammaglobulinemia type 1, which is an immunodeficiency characterized by the failure to produce mature B lymphocytes, and associated with a failure of Ig heavy chain rearrangement. Alternative splicing results in multiple transcript variants encoding different isoforms.

Immunogen Information

Gene ID
695

Swiss Prot
Q06187

Immunogen

A synthetic peptide corresponding to a sequence within amino acids 560-659 of human BTK (Q06187).

Synonyms

AT; ATK; BPK; XLA; IMD1; AGMX1; IGHD3; PSCTK1; BTK

Product Information

Source
Rabbit

Isotype
IgG

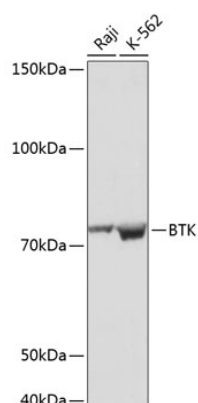
Purification
Affinity purification

Storage

Store at -20°C. Avoid freeze / thaw cycles.

Buffer: PBS with 0.02% sodium azide,0.05% BSA,50% glycerol,pH7.3.

Validation Data



Western blot analysis of various lysates using BTK Rabbit mAb (A19002) at 1:1000 dilution.

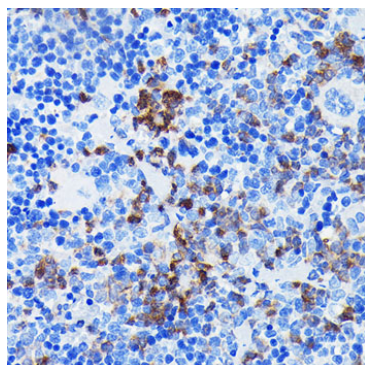
Secondary antibody: HRP-conjugated Goat anti-Rabbit IgG (H+L) (AS014) at 1:10000 dilution.

Lysates/proteins: 25µg per lane.

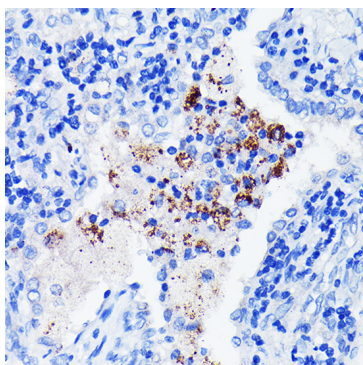
Blocking buffer: 3% nonfat dry milk in TBST.

Detection: ECL Basic Kit (RM00020).

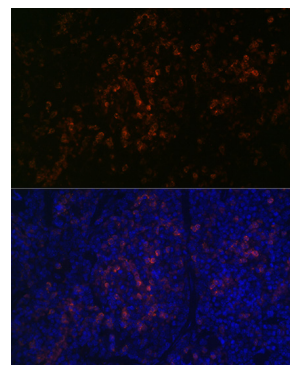
Exposure time: 3min.



Immunohistochemistry analysis of paraffin-embedded Mouse spleen using BTK Rabbit mAb (A19002) at dilution of 1:100 (40x lens). Microwave antigen retrieval performed with 0.01M PBS Buffer (pH 7.2) prior to IHC staining.



Immunohistochemistry analysis of paraffin-embedded Human lung cancer using BTK Rabbit mAb (A19002) at dilution of 1:100 (40x lens). Microwave antigen retrieval performed with 0.01M PBS Buffer (pH 7.2) prior to IHC staining.



Immunofluorescence analysis of paraffin-embedded mouse spleen using BTK Rabbit mAb (A19002) at dilution of 1:100 (40x lens). Secondary antibody: Cy3-conjugated Goat anti-Rabbit IgG (H+L) (AS007) at 1:500 dilution. Blue: DAPI for nuclear staining.